

Sources of Increasing Earnings Inequality: Reconciling Survey and Administrative Data *

John Haltiwanger,[†] Henry R. Hyatt,[‡] and James R. Spletzer[§]

August 26, 2022

Abstract

Recent analyses of survey data highlight observable person characteristics such as education and occupation as critical factors for rising earnings inequality, while industry has an offsetting effect. In contrast, analysis of administrative records data highlights that rising between-firm earnings dispersion and, in turn, between-industry earnings dispersion dominates the rise in earnings inequality. To reconcile these contrasting messages, we construct a novel integrated dataset based upon CPS microdata linked with LEHD administrative records. We find that most of the rise in earnings inequality is accounted for by rising between-industry inequality whether using CPS or LEHD earnings. This finding reflects a substantial contribution of increased sorting and segregation of observable person characteristics, including education and occupation, between industries.

JEL Codes: J31, J21

Keywords: inequality, industry, occupation, wage differentials, sorting, segregation, pay premium

* Any opinions and conclusions expressed herein are those of the authors and do not represent the views of the U.S. Census Bureau. We thank Keith Bailey, Nick Bloom, Fatih Guevenen, Thomas Lemieux, Kristin Sandusky, and participants in the U.S. Census Bureau research lunch, the 2022 Society of Labor Economists conference, and the 2022 NBER Summer Institute for helpful comments and suggestions. All results have been reviewed to ensure that no confidential information is disclosed (CBDRB-FY22-159, CBDRB-FY22-311, and CBDRB-FY22-356). John Haltiwanger was also a Schedule A employee of the U.S. Census Bureau at the time of the writing of this paper.

[†] *Corresponding author* University of Maryland. Email: halt@umd.edu

[‡] Center for Economic Studies, U.S. Census Bureau. Email: henry.r.hyatt@gmail.com

[§] Retired. Email: james.r.spletzer@gmail.com

1 Introduction

What drives increasing earnings inequality? Recent analyses of employer-employee matched administrative data (hereafter often referred to as administrative data) for the US shows that differences across employers drive recent increases in inequality. Matched employer-employee data permits analyzing inequality through the lens of the empirical framework of Abowd, Kramarz, and Margolis (1999), hereafter abbreviated as AKM. Song et al. (2019) demonstrate that increasing earnings inequality in the U.S. is attributable to rising between-firm dispersion, as highly paid workers increasingly work for high-paying firms (i.e., sorting) and with each other (i.e., segregation). Haltiwanger, Hyatt, and Spletzer (2022), hereafter abbreviated as HHS, show that most of the rise in firm level inequality is accounted for by rising between-industry inequality from about ten percent of 4-digit NAICS industries.¹ Using Longitudinal Employer-Household Dynamics (LEHD) data, HHS demonstrate that both increased sorting and segregation at the industry level, along with widening industry-level pay premia, account for more than 60 percent of increasing earnings inequality over the last several decades.

A much larger literature on US inequality uses public-use microdata from the Current Population Survey (CPS). The CPS allows researchers to examine time trends in earnings for more than half a century, and as such is a popular reference point for studying increasing inequality. Studies using the CPS have traditionally focused on the role of individual characteristics such as age, education, and gender in accounting for increasing inequality. The roles of industry and occupation have also been analyzed (for recent studies see Acemoglu and Autor, 2011, and Hoffman, Lee, and Lemieux, 2020, hereafter HLL). These recent studies find a supporting role for rising between occupation differences in earnings with a modest or even a negative contribution of industry.

These two strands of the inequality literature do not provide a consistent answer regarding the contribution of person effects, occupations, firms and industries to rising inequality. Whereas studies using administrative data emphasize the importance of the firm in earnings determination and increasing inequality, the CPS is largely silent on the role of the firm (other than employer characteristics such as firm size or industry). In seeming contrast to HHS, recent studies that use CPS microdata find that industry-level differences offset rather than contribute to increasing inequality. For example,

¹HHS also find that the rise of employment in mega firms is concentrated in the thirty industries that dominate rising earnings inequality. Thus, the increasing importance of *superstar* firms (see, e.g., Autor et al. (2020)) is closely connected to rising inequality. See HHS for more discussion.

HHS state, “Most of the rise in overall earnings inequality is accounted for by rising between-industry inequality,” whereas HLL state “The between-group variance component linked to industry has been declining over time,” and Stansbury and Summers (2020) write “Using the CPS, we show that since the 1980s there has been a decline of about one third in the dispersion of industry wage premia.”

To assess these contrasting messages, we construct a novel source of CPS microdata linked with LEHD administrative records data. We assess the role of several competing explanations for why survey versus administrative records seem to tell such different stories regarding how earnings inequality has increased. These range from relatively straightforward measurement issues to fundamental differences in characterizing how changes in workforce composition drive changes in inequality.

There are several measurement issues that we document and evaluate. One explanation that we explore is quite simple: studies that rely on the CPS exclude many more low earners than those that rely on administrative records data. This sample selection criterion may matter, as inequality measures are sensitive to employment among the lowest-paid jobs. Industry measurement may also matter, as industries reported by households in surveys may differ from those reported by their employers.

Apart from these measurement issues, there is a sharp difference between the way these strands of the inequality literature consider the role of employers to increasing inequality. Studies that utilize the CPS tend to identify the marginal effect of employer characteristics such as industry conditional on already controlling for other factors such as age, education, and occupation. In other words, the conventional CPS interpretation of industry’s effect does not emphasize the role of how workers are segregated or sorted into industries. Studies that rely on administrative records follow the empirical framework of AKM when considering the worker- and firm-level determinants of inequality. In particular, the AKM framework is a natural starting point for considering the roles of sorting and segregation in addition to pay premia in the evolution of inequality. This distinction matters as changing workforce composition manifests itself in earnings inequality mainly through firm- and industry-level differences: that is, through sorting and segregation. Person effects are also potentially quite different in the AKM framework compared to observable person characteristics such as age, education, and occupation in a human capital regression framework.

To address these questions, we have assembled a new and unique data source. We have linked respondents in the CPS Annual Social and Economic Supplement (ASEC) with administrative records from the U.S. Census Bureau’s LEHD data. The LEHD data we use here include the AKM worker and firm effects as estimated by HHS. We believe that our linked CPS-LEHD data is the first U.S. mi-

crodata to include both the AKM components of wage determination along with the more traditional CPS based measures of age, education, gender, occupation, and industry.

We find that most of the rise in earnings inequality is accounted for by rising between-industry inequality with the CPS data. This required three modifications to the typical analysis of CPS data. First, we change the methodology, moving away from a marginal contribution of industry conditional on demographic characteristics and switching to a full variance decomposition of the human capital earnings equation that accounts for covariances that measure segregation and sorting into industries. Second, after common coding both the CPS and the LEHD (which does not substantially change the between-industry contribution to variance growth in the administrative data), the between-industry contribution to variance growth is larger in the linked CPS-LEHD sample than it is in the common-coded CPS. Part of this reflects geographic effects that are idiosyncratic to the CPS. And third, replacing the CPS measure of SIC industry sector with a 4-digit NAICS industry measure increases the between-industry contribution to variance growth, with most of this increase coming from moving from sectors to 4-digit industry. Switching from SIC to NAICS and switching from a CPS industry sector measure to a LEHD industry sector measure both result in small increases to the between-industry contribution to variance growth, but the effect of each of these changes to a higher quality industry measure is smaller than the effect of increasing the amount of industry detail. It is only the administrative data that permits this industry detail.

We also find the effect of observable person characteristics in the human capital earnings equation differ substantially relative to person effects from the AKM earnings equation. Using the human capital earnings equation with CPS observables such as age, education and occupation, within-industry variation in these factors account accounts for 18.1% to 22.2% of the earnings variance, whereas within-firm variation in the person effect accounts for 44.0% to 47.6% of the earnings variance using the AKM earnings equation (and this increases by another ten percent or so including between-firm, within-industry variation). This difference is reversed for the unexplained contribution to earnings variance. Using the human capital earnings equation, 55.0% to 60.3% of the earnings variance is unaccounted for, whereas this is 9.9% to 15.6% using the AKM earnings equation. These large differences in cross sectional level variances translate into large differences in the role of person effects (and in turn sorting and segregation effects) in the growth of earnings dispersion.

Even though observable person characteristics don't capture as much variation as AKM person effects, we find similar messages on the role of between-industry dispersion using either observable

person characteristics or AKM person effects. When we use administrative data earnings and detailed industry codes, by construction overall industry effects are the same. However, the decomposition of these effects into between-industry sorting, segregation and pay premia differ depending on the use of observable person characteristics vs. the AKM person effects. Interestingly, we find that sorting contribution is large (about 30 percent) and almost identical using either approach. Using observable person characteristics yields a smaller contribution of between-industry segregation but a larger role for between-industry premia but either way these two contributions add up to about 35 percent.

The HLL analysis finds an important but supporting role for occupation effects in accounting for rising earnings dispersion. Our full variance accounting decomposition using the HLL human capital equation with the CPS data shows that 22.5% of rising earnings dispersion is accounted for occupation effects with 16.2% reflecting sorting and segregation effects between industries, and the remaining 6.3% occurs within industries. When we use higher quality and more detailed industry codes from LEHD, we consistently find that the majority of the contribution of occupations to increasing inequality occurs between rather than within industries. Furthermore, when we use the detailed industries from LEHD, the within-industry contribution of occupations has an offsetting effect on inequality growth. In other words, when we use 299 detailed LEHD industries, we find that all of the contribution of occupations to increasing inequality is due to sorting and segregation across industries.

A potential concern about this finding is that high quality and detailed industry codes may be acting as a placeholder for high quality and more detailed occupation codes. This concern is difficult to address with either the CPS or the LEHD data. We turn to the Occupational Employment and Wage Statistics (OEWS) data for further analysis. While we don't have access to the underlying microdata, the patterns from our analysis of published OEWS aggregates are informative. We find that most (87.8%) of the increase in earnings dispersion at the industry by occupation level is accounted for by rising between-industry dispersion. Sorting of high (low) occupation workers into high (low) wage industries accounts for 53.7% of the 87.8%. These patterns imply that industry is not a placeholder for occupation but that it is important to take into account the increased sorting of workers by occupation across industries. In addition, the increased segregation of occupations into particular industries also highlights the importance of the interaction of industries and occupations.

The paper proceeds as follows. We provide an overview in Section 2 of how inequality has been characterized in administrative records data to identify the roles of sorting, segregation, and pay pre-

nia. We review some of the main findings regarding the contribution of industry from Haltiwanger, Hyatt, and Spletzer (2022). Also, in Section 2, we review the findings from HLL in more detail as this paper provides an excellent synthesis of the literature using household surveys and independent confirming evidence from the CPS. In Section 3, we present some tabulations using public-use CPS microdata alone that allow us to begin answering several of the methodology and measurement issues involved. We show that methodology matters. In Section 4, we adjust for differences in the sample composition of how analysts often use the CPS and various administrative records. In Section 5, we describe linking the CPS and the LEHD and we present some interesting descriptive statistics on measurement differences in the two datasets. An analysis of increasing inequality in our linked CPS-LEHD dataset is presented in Section 6. Our analysis of the OEWS is in Section 7. A sensitivity analysis is in Section 8. Concluding remarks are in Section 9.

2 Literature review

2.1 Analysis of inequality using linked employer-employee data

The recent literature on inequality that uses administrative data takes AKM as its starting point. In the AKM framework, log earnings $y_{i,j,k,t}$ of worker i at firm j in industry k at time t are a linear function of a worker effect θ_i , a firm effect $\psi_{j,k}$, and time-varying observable characteristics $X_{i,t}$ (usually including age and time effects) that have marginal effects according to the vector β .² This is expressed as

$$\underbrace{y_{i,j,k,t}}_{\text{log real earnings}} = \underbrace{X_{i,t}\beta}_{\text{time-varying observables}} + \underbrace{\theta_i}_{\text{person effect}} + \underbrace{\psi_{j,k}}_{\text{firm effect}} + \underbrace{\varepsilon_{i,j,k,t}}_{\text{residual}}. \quad (1)$$

Following Card, Heining, and Kline (2013), this model is commonly estimated separately by seven-year time intervals. Estimation of this model on matched employer-employee data provides a comprehensive description of the extent to which earnings inequality is determined by observable characteristics, worker effects, firm effects, and sorting. Changes in inequality are captured through a variance

²We include here the industry k subscript here introduced by HHS. For a formal treatment of the differences between the variance decompositions of Card, Heining, and Kline (2013), Song et al. (2019), and HHS, see Appendix A.

decomposition. The variance of labor earnings $\text{var}(y_{i,j,k,t})$ can be written as follows:

$$\underbrace{\text{var}(y_{i,j,k,t})}_{\text{earnings variance}} = \underbrace{\text{var}(X_{i,t}\beta) + \text{var}(\theta_i) + 2\text{cov}(X_{i,t}\beta, \theta_i)}_{\text{person effects and observables}} + \underbrace{\text{var}(\psi_{j,k})}_{\text{pay premia}} + \underbrace{2\text{cov}(\theta_i, \psi_{j,k}) + 2\text{cov}(X_{i,t}\beta, \psi_{j,k})}_{\text{sorting}} + \underbrace{\text{var}(\varepsilon_{i,j,k,t})}_{\text{residual dispersion}}. \quad (2)$$

The contribution of workers to earnings dispersion is the sum of the variance of the worker effects, that of observable characteristics, and their covariance: $\text{var}(X_{i,t}\beta) + \text{var}(\theta_i) + 2\text{cov}(X_{i,t}\beta, \theta_i)$. The contribution of firms is given by the dispersion of the firm pay premia $\text{var}(\psi_{j,k})$. Sorting is the extent to which firms with low- versus high-effects employ workers with low- vs. high-effects, as well as low- versus high-observables: $2\text{cov}(\theta_i, \psi_{j,k}) + 2\text{cov}(X_{i,t}\beta, \psi_{j,k})$.

Card, Heining, and Kline (2013) used a variance decomposition of this form to study the evolution of inequality in West Germany. To do so, they estimated the model separately over a number of time periods (e.g., 1985-1991), and compared the contribution of these components between different periods (e.g., relative to 2002-2009) to understand the contribution of workers, firms, and sorting to changes in inequality. They found that earnings dispersion increased due to increases in the dispersion of worker and firm effects, as well as increases in sorting.

More recently, Song et al. (2019) considered the evolution of earnings dispersion in the U.S. These authors were motivated by the fact that increases in earnings inequality occurred between rather than within firms. A key lesson from Song et al. (2019) is that there is a difference between the between-firm component of earnings dispersion estimated from a simple within- and between-firm variance decomposition and the cumulative contributions of firm pay premia and sorting estimated from the AKM model. Song et al. reconciled this discrepancy by expressing the between-worker component $\text{var}(\theta_i)$ in terms of that which is due to segregation (that is, the tendency for workers with low vs. high effect to work with each other), denoted by $\text{var}(\overline{\theta_{j,k}})$, relative to worker-driven dispersion, denoted by $\text{var}(\theta_i - \overline{\theta_{j,k}})$. The variance decomposition can therefore be expressed as:

$$\begin{aligned}
\text{var}(y_{i,j,k,t}) = & \underbrace{\text{var}(\theta_i - \overline{\theta_{j,k,t}}) + \text{var}(X_{i,t}\beta - \overline{X_{j,k}\beta}) + 2\text{cov}(\theta_i - \overline{\theta_{j,k}}, X_{i,t}\beta - \overline{X_{j,k}\beta})}_{\text{person effects and observables (within-firm)}} + \\
& \underbrace{\text{var}(\overline{\theta_{j,k}}) + \text{var}(\overline{X_{j,k}\beta}) + 2\text{cov}(\overline{\theta_{j,k}}, \overline{X_{j,k}\beta})}_{\text{segregation (between-firm)}} + \underbrace{\text{var}(\psi_j)}_{\text{pay premia (between-firm)}} + \\
& \underbrace{2\text{cov}(\overline{\theta_{j,k}}, \psi_{j,k}) + 2\text{cov}(\overline{X_{j,k}\beta}, \psi_{j,k})}_{\text{sorting (between-firm)}} + \underbrace{\text{var}(\epsilon_{i,j,t})}_{\text{residual (within-firm)}}.
\end{aligned} \tag{3}$$

In the Song et al. (2019) variance decomposition, firm segregation is defined as $\text{var}(\overline{\theta_{j,k}} + \overline{X_{j,k}\beta})$, and measures differences among firms in terms of the workers that they employ.³ If all firms employ, on average, workers with similar worker effects and observable characteristics, then the contribution of segregation to earnings inequality will be small. By contrast, if some firms employ workers only with high effects, and other firms employ workers only with small effects, the contribution of segregation to inequality can be substantial. Note that increasing inequality due to segregation does not imply that firms do not play a role in terms of increasing inequality. For example, recent work by Herkenhoff et al. (2018) and Jarosch, Oberfield, and Rossi-Hansberg (2019) indicate that workers learn from their co-workers. Increasing segregation across firms could therefore provide fewer opportunities for low-paid workers to learn new skills that could allow them to increase their pay.

The extension of AKM considered by Song et al. (2019) offers a powerful framework in which to consider the between-firm contribution to increasing inequality. Workers at some firms earn more than others. They find that firm pay premia $\text{var}(\psi_{j,k})$ have a small effect, but most of the firm effects on increasing dispersion are due to differences in the workers that firms employ, through both segregation and sorting.

HHS present an extension of the Song et al. (2019) framework to consider differences that are within- versus between-industry. This analysis was motivated by the findings of Haltiwanger and Spletzer (2020), who showed that rising between-firm inequality in the U.S. has been driven by between-industry inequality. The pay associated with jobs in low-paying industries such as restaurants and general merchandise stores has been declining, while that of jobs in high-paying industries such as information services and financial investment activities has been increasing. HHS consider

³Note that $\text{var}(\overline{\theta_{j,k}} + \overline{X_{j,k}\beta}) = \text{var}(\overline{\theta_{j,k}}) + \text{var}(\overline{X_{j,k}\beta}) + 2\text{cov}(\overline{\theta_{j,k}}, \overline{X_{j,k}\beta})$.

the extent to which this increasing between-industry inequality is due to sorting, segregation, and pay premia.

HHS document that over the time period 1996-2002 to 2012-2018, the variance of annual log earnings increased from 0.794 to 0.915. Between-industry differences account for 61.9% of this increase. This 61.9% between-industry effect is accounted for by increases in industry-level sorting (28.0%), segregation (25.2%), and dispersion in pay premia (8.7%). While the contribution of industry-specific earnings differentials are relatively small, the changing composition of the workforce across industries (sorting and segregation) is very important. These findings imply that the increased segregation and sorting accounting for most of the increase in earnings inequality is between industries. Strikingly, HHS find that it is only a relatively small fraction of industries (about one-tenth of 4-digit NAICS industry groups) in the tails of the earnings distribution that account for virtually all of the increasing role of between-industry dispersion.

2.2 Analysis of inequality using CPS data

It is beyond the scope of this study to provide an in-depth synthesis of the voluminous literature on inequality from household surveys, and in particular from the CPS for the U.S. Fortunately, HLL provide such an in-depth synthesis, so our discussion here draws heavily on the insights from that paper.⁴ The analysis of inequality in the literature using the CPS focuses on observable worker characteristics along with key characteristics of the job including industry, occupation, and location. HLL conduct their own independent analysis using the CPS to help summarize and synthesize the large literature using the CPS. This independent analysis is an excellent synthesis of the existing literature and serves as the starting point for our own analysis.⁵

HLL's Figure 3 summarizes the contributions of worker characteristics. They find that most of the inequality growth is due to the sum of four variance components: (i) rising within-group dispersion for high-school-educated workers, (ii) rising within-group dispersion for college-educated workers that is greater than the increase in growth in dispersion for high-school-educated workers, (iii) rising between group dispersion for education, and (iv) composition effects linked to the shift from high-school-educated to college-educated workers. In interpreting these findings, it is important to emphasize the

⁴See HLL for the citations to the seminal contributions to the literature using the CPS.

⁵We will use the CPS-ASEC data posted by HLL to the *Journal of Economic Perspectives* website to replicate and extend their results. Unless otherwise stated, all references in this paper to the "CPS" refer to the CPS-ASEC.

important role of rising within-group inequality. Put differently, residual within-group effects play a much larger role than the residual inequality from the matched employer-employee analysis using the AKM approach as in Song et al. (2019) and HHS.

Firms do not have a direct role in the household survey-based analysis but are captured indirectly via industry and location effects. Occupation effects, which have become increasingly analyzed (see, e.g., Acemoglu and Autor, 2011), capture some combination of unobserved worker characteristics and firm effects. HLL quantify the marginal contribution of occupation, industry, and location effects over and above their baseline analysis of worker characteristics. Figure 4 of HLL shows that increasing occupation wage differentials play an important but supporting role compared to the baseline contribution from worker characteristics only. The marginal contribution of inter-industry wage differentials is actually negative after controlling for the baseline worker and occupation effects.⁶ Location effects contribute little to rising dispersion.

As we discuss below, HLL’s approach limits the role of occupation, industry, and location since all of the covariances with baseline worker characteristics are attributed to the latter (HLL acknowledge this in their paper).⁷ We build on HLL’s approach using the CPS by quantifying such covariance effects directly. The covariance between observable worker characteristics and industry is related to the sorting and segregation effects emphasized in Song et al. (2019) and HHS.

3 Industry and increasing inequality in the CPS

3.1 Replicate CPS results from Hoffman, Lee, and Lemieux (2020)

We estimate the following human capital earnings equation:

$$y_i = AgeEduc_i\beta_1 + Occupation_i\beta_2 + Industry_i\beta_3 + \varepsilon_i, \quad (4)$$

where y is log real annual earnings and i is individual. $AgeEduc_i$ is a vector of dummy variables that are equal to one if worker i has that combination of age and education, and are equal to zero otherwise.

⁶Stansbury and Summers (2020) also find a negative contribution of industry after controlling for person and occupation effects.

⁷HLL write on page 67: “Our objective here is to assess how much of the rise in income dispersion can be explained by these factors, above and beyond what is already being explained by education... We note that this calculation may understate the full contribution of changing demand by occupation, industry, and location, because it does not capture the part of the contribution that is being mediated through education.”

Table 1: Estimation of the human capital earnings equation using CPS ASEC data and 5-year intervals

	1975- 1979	1980- 1984	1985- 1989	1990- 1994	1995- 1999	2000- 2004	2005- 2009	2010- 2014	2015- 2018	Growth 1975-79 to 2015-18
Earnings variance	0.283	0.292	0.310	0.332	0.349	0.372	0.380	0.390	0.398	0.115
<i>Contributions to total variance, in levels:</i>										
Age and education	0.045	0.049	0.060	0.071	0.079	0.088	0.092	0.094	0.093	0.048
Occupation	0.023	0.022	0.023	0.021	0.023	0.024	0.026	0.026	0.027	0.004
Industry	0.017	0.017	0.016	0.015	0.014	0.012	0.011	0.011	0.011	-0.006
Residual	0.198	0.205	0.220	0.225	0.234	0.249	0.251	0.259	0.267	0.069
<i>Contributions to total variance, in percentages:</i>										
Age and education	15.9%	16.8%	18.8%	21.5%	22.6%	23.5%	24.2%	24.1%	23.5%	41.9%
Occupation	8.3%	7.4%	7.1%	6.3%	6.6%	6.4%	6.9%	6.8%	6.8%	3.3%
Industry	5.9%	5.7%	5.1%	4.4%	3.9%	3.1%	2.8%	2.8%	2.7%	-5.3%
Residual	69.9%	70.1%	69.0%	67.8%	66.8%	66.9%	66.0%	66.4%	67.0%	60.1%

Notes: We downloaded the HLL CPS-ASEC data from the *Journal of Economic Perspectives* website. Our earnings variable is the natural log of real annual labor earnings. Our regression specification is based on HLL Figure 4, except we use labor earnings instead of total income, and we pool male and females. “Age and education” is the fraction of the variance of labor earnings explained by equation (5). “Occupation” is the marginal contribution of including occupation, obtained by subtracting the percentage of the variance explained by equation (5) from that of equation (6). “Industry” is the marginal contribution of industry, obtained by subtracting the percentage of variance explained by equation (6) from that of equation (7). Industry is defined using 12 SIC categories. “Residual” is the fraction of the variance that is unexplained when estimating equation (7).

Specifically, we allow for a separate effect for each of eight five-year age ranges $\{26-30, 31-35, \dots, 61-65\}$ interacted with five education dummies $\{\text{high school dropouts, high school graduates, some college, college graduates, and college post-graduates}\}$. The marginal effects of these demographic categories on earnings is given by β_1 . $Occupation_i$ is a vector of dummy variables that are equal to one if worker i is employed in that occupation, and are equal to zero otherwise. The marginal effect of each of the nine occupation categories is given by the vector β_2 . Analogously, $Industry_i$ is a vector of dummy variables for each of (initially) twelve SIC industries, with marginal effects given by the vector β_3 .

For each five-year interval $\{1975-1979, 1980-1984, \dots, 2015-2018\}$, we estimate the human capital earnings equation in three steps:

$$y_i = AgeEduc_i \beta_1 + \varepsilon_i \quad (5)$$

$$y_i = AgeEduc_i \beta_1 + Occupation_i \beta_2 + \varepsilon_i \quad (6)$$

$$y_i = AgeEduc_i \beta_1 + Occupation_i \beta_2 + Industry_i \beta_3 + \varepsilon_i \quad (7)$$

Equation (5) is used as the baseline equation, and measures the percentage of variance explained by age and education. We denote the marginal contribution of occupation as the additional percentage of the variance explained by equation (6) relative to equation (5). The marginal contribution of industry is obtained last by subtracting the percentage of variance explained by equation (6) from that of equation (7).

Table 1 replicates HLL Figure 4, with two exceptions: we use labor income instead of total income, and we pool males and females instead of presenting gender specific results.⁸ We offer our thanks to HLL for making their data and replication code available on the *Journal of Economic Perspectives* website.

We find that in each 5-year interval, the contribution of age by education effects are large and growing over time. Occupation effects contribute positively to both levels and growth. The marginal contribution of industry is positive: 0.017 (5.9% of 0.283) in 1975-1979 and 0.011 (2.7% of 0.398) in 2015-2018. However, the marginal contribution of industry is falling over time: -0.006 (-5.3% of 0.115) over the 1975-1979 to 2015-2018 intervals. Importantly, most of the variation in earnings dispersion in levels and changes is unexplained in these CPS human capital earnings equations.

⁸These sample selection criteria result in only small differences relative to HLL, as shown in Appendix Table A1.

Table 2: Estimation of the human capital earnings equation using CPS-ASEC data and 7-year intervals

	1975- 1981	1982- 1988	1989- 1995	1996- 2002	2004- 2010	2012- 2018	Growth 1975-81 to 2012-18	Growth 1996-02 to 2012-18
Earnings variance	0.283	0.310	0.333	0.360	0.380	0.397	0.113	0.037
<i>Using 12 SIC industries</i>								
Age and education	15.5%	18.1%	21.3%	23.1%	24.2%	23.8%	44.4%	30.5%
Occupation	8.1%	7.1%	6.5%	6.4%	7.0%	6.7%	3.2%	10.0%
Industry	6.0%	5.3%	4.4%	3.6%	2.8%	2.7%	-5.6%	-5.9%
Residual	70.4%	69.5%	67.8%	67.0%	66.0%	66.9%	58.1%	65.5%
<i>Using 18 NAICS industries</i>								
Age and education	15.5%	18.1%	21.3%	23.1%	24.2%	23.8%	44.4%	30.5%
Occupation	8.1%	7.1%	6.5%	6.4%	7.0%	6.7%	3.2%	10.0%
Industry	7.8%	7.3%	6.1%	4.9%	4.4%	4.5%	-3.7%	0.8%
Residual	68.5%	67.5%	66.2%	65.6%	64.5%	65.0%	56.2%	58.8%

Notes: Authors' tabulations of HLL CPS-ASEC data downloaded from *Journal of Economic Perspectives* website. Our earnings variable is the natural log of real annual labor earnings. Our regression specification is based on HLL Figure 4, except we use labor earnings instead of total income, we pool male and females, the year 2000 is deleted, and we use different measures of industry in the top and bottom panels. Our SIC 12 follows HLL using 12 categories of the Standard Industrial Classification. NAICS 18 refers to 18 categories of the North American Industrial Classification System. Coding of CPS industry data (indly) into NAICS industries follows Table C-5 of Pollard (2019). "Age and education" is the fraction of the variance of labor earnings explained by Equation (5). "Occupation" is the marginal contribution of including occupation, obtained by subtracting the percentage of the variance explained by equation (5) from that of equation (6). "Industry" is the marginal contribution of industry, obtained by subtracting the percentage of variance explained by equation (6) from that of equation (7). "Residual" is the fraction of the variance that is unexplained when estimating equation (7).

Table 2 mimics Table 1 with three differences: we use 7-year intervals instead of 5-year intervals (so we match the time intervals used by HHS), we use both SIC and NAICS measures of industry, and we delete the year 2000 from the data.⁹ The SIC industry has 12 categories, and the NAICS measure has 18 categories. Coding of the CPS industry variable into NAICS follows Table C-5 of Pollard (2019). The contribution of person effects, occupation effects, and unexplained factors are similar in Tables 1 and 2.

In each seven-year interval, the marginal contribution of SIC industry is positive: 6.0% of 0.283 in 1975-1981, 3.6% of 0.360 in 1996-2002, and 2.7% of 0.397 in 2012-2018. In each seven-year interval, the marginal contribution of NAICS sectors is larger than the marginal contribution of SIC

⁹We delete the year 2000 from our dataset because we cannot link the CPS with administrative records in this year, and so is done to ensure consistency with our later results.

industry. The marginal contribution of SIC industry is falling over time: -5.6% of 0.113 over the 1975-1981 to 2012-2018 intervals, and -5.9% of 0.037 over the 1996-2002 to 2012-2018 intervals. The marginal contribution of NAICS sectors is falling over the longer time interval (-3.7% of 0.113 over the 1975-1979 to 2012-2018 intervals), and is slightly positive (0.8% of 0.037) over the 1996-2002 to 2012-2018 intervals.

These results in Table 2 tell us that switching from SIC to NAICS switches the sign but has a relatively small effect on the marginal contribution of industry to variance growth in the CPS. Furthermore, these results are relatively insensitive to different time periods.

3.2 Within- and between-industry variance decomposition

We now estimate a simple within and between-industry variance decomposition:

$$\underbrace{\text{var}(y_{i,k} - \bar{y})}_{\text{earnings variance}} = \underbrace{\text{var}(y_{i,k} - \bar{y}_k)}_{\text{within-industry dispersion}} + \underbrace{\text{var}(\bar{y}_k - \bar{y})}_{\text{between-industry dispersion}} \quad (8)$$

The first term on the right hand side of the above equation is the within-industry component of variance, and the second term is the between-industry variance. Note that because we are keeping track of the relevant industry-level average for worker i , we add a subscript for industry k and so express earnings as $y_{i,k}$ to capture the earnings of worker i employed in industry k . Table 3 presents the results of this decomposition for seven-year intervals, using both SIC and NAICS industries.

In each seven-year interval, the level of between-industry variance $\text{var}(\bar{y}_k - \bar{y})$ using SIC is positive: 4.8% of 0.283 in 1975-1979, 4.2% of 0.360 in 1975-1981, and 5.1% of 0.397 in 2012-2018. In each 7-year interval, the level of between-industry variance using NAICS is larger than the between-industry variance using SIC. The between-industry variance component is increasing over time: 9.2% of 0.113 over the 1975-1979 to 2012-2018 intervals using NAICS sectors, and 23.1% of 0.037 over the 1996-2002 to 2012-2018 intervals using NAICS sectors.

Table 3 tells us that the contribution of industry to variance growth is positive (23.1%), and is substantially larger than the corresponding marginal contribution of industry in Table 2 (0.8%). This increase, from 0.8% to 23.1%, is about one-third of the difference between HLL's and HHS's industry effects. Thus, the decomposition methodology matters, and the variance decomposition in the next subsection will show us that this large difference is originating from covariances that are implicit in

Table 3: Within- and between-industry variance decomposition, CPS-ASEC data

	1975- 1981	1982- 1988	1989- 1995	1996- 2002	2004- 2010	2012- 2018	Growth 1975-81 to 2012-18	Growth 1996-02 to 2012-18
Earnings variance	0.283	0.310	0.333	0.360	0.380	0.397	0.113	0.037
<i>Using 12 SIC industries</i>								
Within-industry	95.2%	95.2%	95.4%	95.8%	95.3%	94.9%	94.0%	86.2%
Between-industry	4.8%	4.8%	4.6%	4.2%	4.7%	5.1%	6.0%	13.8%
<i>Using 18 NAICS industries</i>								
Within-industry	93.2%	93.3%	93.8%	94.1%	93.6%	92.5%	90.8%	76.9%
Between-industry	6.8%	6.7%	6.2%	5.9%	6.4%	7.5%	9.2%	23.1%

Notes: HLL CPS-ASEC data downloaded from *Journal of Economic Perspectives* website. Pooled males and females. The year 2000 is deleted. Earnings is the natural log of real annual labor earnings. The 12 SIC aggregate industries are defined following the Standard Industrial Classification system. The 18 NAICS aggregate industries are defined following the North American Industrial Classification System. Coding of CPS industry data (indly) into NAICS industries follows Table C-5 of Pollard (2019). Definitions follow equation (8).

the within and between estimate but excluded from the marginal contribution of industry.

3.3 Variance decomposition of the human capital earnings equation

We re-write the human capital earnings equation used by HLL as

$$y_{i,k} = Z_{i,k}\beta_Z + Industry_{i,k}\beta_3 + \varepsilon_{i,k}, \quad (9)$$

where Z concatenates the $AgeEduc_i$ and $Occupation_i$ vectors, and β_Z concatenates the marginal effects vectors β_1 and β_2 . Define $\overline{Z_k\beta_Z}$ as the industry mean of $Z_{i,k}\beta_Z$. Taking variances of both sides of the human capital earnings equation results in:

$$\underbrace{\text{var}(y_{i,k})}_{\text{earnings variance}} = \underbrace{\text{var}(Z_{i,k}\beta_Z - \overline{Z_k\beta_Z})}_{\substack{\text{within-industry dispersion} \\ \text{from age, education,} \\ \text{and occupation}}} + \underbrace{\text{var}(\overline{Z_k\beta_Z})}_{\substack{\text{between-industry} \\ \text{segregation}}} + \underbrace{\text{var}(Industry_{i,k}\beta_3)}_{\substack{\text{between-industry} \\ \text{pay premia}}} + \underbrace{2\text{cov}(\overline{Z_k\beta_Z}, Industry_{i,k}\beta_3)}_{\substack{\text{between-industry sorting}}} + \underbrace{\text{var}(\varepsilon_{i,k})}_{\substack{\text{residual dispersion} \\ \text{(within-industry)}}} \quad (10)$$

Each of the terms on the right hand side of this variance decomposition can be labeled with the terminology of Song et al. (2019) and Haltiwanger, Hyatt, and Spletzer (2022): $\text{var}(Z_{i,k}\beta_Z - \overline{Z_k\beta_Z})$ is the within-industry effect of observable person characteristics, $\text{var}(\overline{Z_k\beta_Z})$ is industry segregation, defined as how persons with similar observables (as given by $Z_{i,k}\beta_Z$) concentrate within industries, $\text{var}(\text{Industry}_{i,k}\beta_3)$ is dispersion attributable to the industry pay premia, and $2\text{cov}(\overline{Z_k\beta_Z}, \text{Industry}_{i,k}\beta_3)$ is industry sorting, defined as how frequently high-paid workers in terms of observable characteristics $\overline{Z_k\beta_Z}$ work for high-paying industries, and how low-paid workers in terms of observable characteristics work for low-paying industries.

Table 4 presents the results of this variance decomposition for 7-year intervals, using both SIC and NAICS industries. By construction, the between-industry overall contribution is equal to the sum of industry-level segregation, industry-level pay premia, and industry-level sorting. Looking at variance growth from 1996-2002 to 2012-2018, and using NAICS sectors (the rightmost column of the lower panel of Table 4), industry segregation and industry sorting are positive (14.8% and 7.3% respectively), with the industry pay premia very small (1.0%). This pattern is similar to HHS, although the magnitudes here are smaller than in HHS: (14.8%, 1.0%, 7.3%) here, versus (25.2%, 8.7%, 28.0%) in HHS. Looking at the cross-sectional regressions, the residual accounts for 65.0% of CPS earnings variance in the 2012-2018 time period when using NAICS. This is very different than the 13.7% in HHS, who use an AKM earnings equation. Looking at variance growth from 1996-2002 to 2012-2018, 58.8% of variance growth is unexplained when using NAICS. This is very different than the -3.9% in HHS.

Tables 2 and 4 tells us that methodology matters. Moving from the marginal contribution of industry to a full variance decomposition of the human capital earnings regression increases the industry effect from 0.8% to 23.1% (roughly one-third of the difference between HLL and HHS). Covariances matter – this is evident in the segregation and sorting terms, which measure how labor composition varies across industries. Industry earnings differentials, conditional on segregation and sorting, are very small (1.0%) in our preferred specification.

These methodological issues can be interpreted in terms of the difference in the way person characteristics are treated in Tables 2 and 4. In the former, age by education plus occupation effects account for 40.5% of the increase in earnings inequality. In Table 4, person characteristics inclusive of age by education and occupation account for 18.2% of rising dispersion for the 1996-02 to 2012-18 periods. This difference is because, as noted above, in Table 4, person effects that are associated with

Table 4: Variance decomposition of the human capital earnings equation, CPS-ASEC data

	1975- 1981	1982- 1988	1989- 1995	1996- 2002	2004- 2010	2012- 2018	Growth 1975-81 to 2012-18	Growth 1996-02 to 2012-18
Earnings variance	0.283	0.310	0.333	0.360	0.380	0.397	0.113	0.037
<i>Using 12 SIC industries</i>								
Within-industry:	95.2%	95.2%	95.4%	95.8%	95.3%	94.9%	94.0%	86.2%
Age, educ., & occ.	24.9%	25.7%	27.5%	28.8%	29.3%	28.0%	35.8%	20.5%
Residual	70.3%	69.5%	67.8%	67.0%	66.0%	66.9%	58.2%	65.7%
Between-industry:	4.8%	4.8%	4.6%	4.2%	4.7%	5.1%	6.0%	13.8%
Segregation	2.2%	2.4%	2.8%	3.0%	3.5%	4.0%	8.5%	13.3%
Pay premia	7.9%	6.7%	5.5%	4.5%	3.5%	3.4%	-7.8%	-6.9%
Sorting	-5.3%	-4.3%	-3.7%	-3.3%	-2.4%	-2.3%	5.2%	7.4%
<i>Using 18 NAICS industries</i>								
Within-industry:	93.2%	93.3%	93.8%	94.1%	93.6%	92.5%	90.8%	76.9%
Age, educ., & occ.	24.7%	25.9%	27.6%	28.5%	29.1%	27.5%	34.6%	18.2%
Residual	68.5%	67.5%	66.2%	65.6%	64.5%	65.0%	56.2%	58.8%
Between-industry:	6.8%	6.7%	6.2%	5.9%	6.4%	7.5%	9.2%	23.1%
Segregation	2.9%	2.9%	3.2%	3.3%	3.8%	4.4%	8.1%	14.8%
Pay premia	10.2%	9.0%	7.3%	6.0%	5.4%	5.5%	-6.2%	1.0%
Sorting	-6.3%	-5.2%	-4.3%	-3.4%	-2.8%	-2.4%	7.3%	7.3%

Notes: Authors' tabulations of HLL CPS-ASEC data downloaded from *Journal of Economic Perspectives* website. Pooled males and females. The year 2000 is deleted. Earnings is natural log of real annual labor earnings. The 12 SIC aggregate industries are defined following the Standard Industrial Classification system. The 18 NAICS aggregate industries are defined following the North American Industrial Classification System. Coding of CPS industry data (indly) into NAICS industries follows Table C-5 of Pollard (2019). See equation (10) for definitions.

Table 5: Variance decomposition of the human capital earnings equation, CPS-ASEC data, with detail on age, education, and occupation

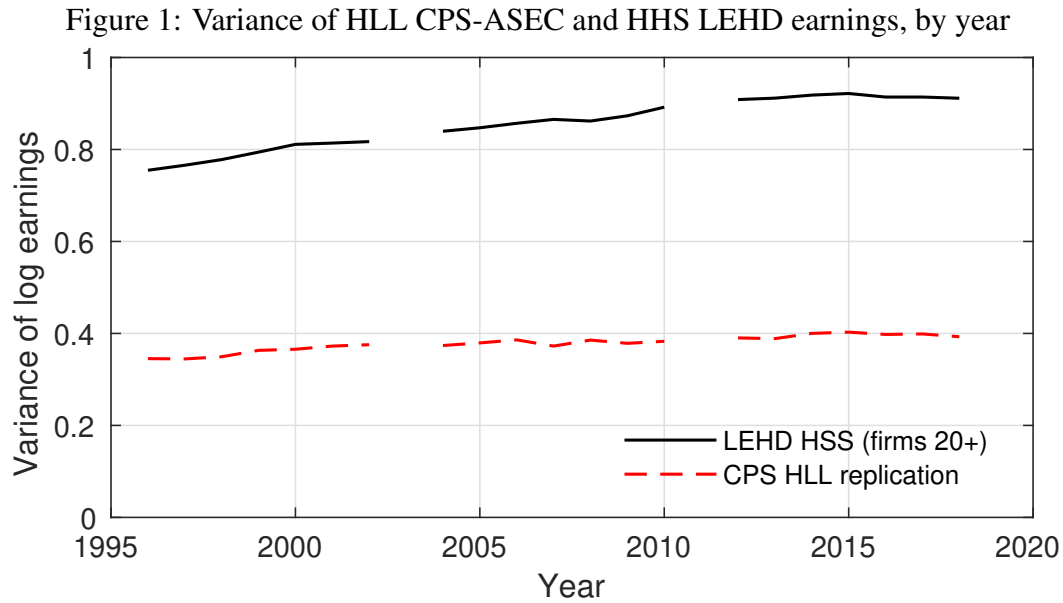
	1975- 1981	1982- 1988	1989- 1995	1996- 2002	2004- 2010	2012- 2018	Growth 1975-81 to 2012-18	Growth 1996-02 to 2012-18
Earnings variance	0.283	0.310	0.333	0.360	0.380	0.397	0.113	0.037
<i>Using 18 NAICS industries</i>								
Within-industry:	93.2%	93.3%	93.8%	94.1%	93.6%	92.5%	90.8%	76.9%
Age, education & occupation:	24.7%	25.9%	27.6%	28.5%	29.1%	27.5%	34.6%	18.2%
Age and education	10.7%	11.5%	12.1%	13.0%	13.5%	12.9%	18.4%	11.8%
Occupation	7.8%	7.3%	7.5%	7.2%	7.3%	6.9%	4.7%	4.1%
Covariance: age+educ. & occ.	6.2%	7.1%	8.0%	8.2%	8.3%	7.7%	11.4%	2.2%
Residual	68.5%	67.5%	66.2%	65.6%	64.5%	65.0%	56.2%	58.8%
Between-industry:	6.8%	6.7%	6.2%	5.9%	6.4%	7.5%	9.2%	23.1%
Segregation:	2.9%	2.9%	3.2%	3.3%	3.8%	4.4%	8.1%	14.8%
Age and education	1.8%	1.7%	1.6%	1.8%	1.9%	2.0%	2.4%	3.8%
Occupation	0.6%	0.4%	0.5%	0.5%	0.5%	0.7%	0.9%	2.5%
Covariance: age+educ. & occ.	0.5%	0.7%	1.0%	1.1%	1.3%	1.8%	4.9%	8.4%
Pay premia	10.2%	9.0%	7.3%	6.0%	5.4%	5.5%	-6.2%	1.0%
Sorting:	-6.3%	-5.2%	-4.3%	-3.4%	-2.8%	-2.4%	7.3%	7.3%
Covariance: age+educ. & ind.	-4.1%	-3.4%	-2.5%	-2.2%	-2.0%	-1.8%	3.9%	2.0%
Covariance: industry & occ.	-2.3%	-1.8%	-1.8%	-1.2%	-0.8%	-0.6%	3.5%	5.3%

Notes: Authors' tabulations of HLL CPS-ASEC data downloaded from *Journal of Economic Perspectives* website. Pooled males and females. The year 2000 is deleted. Earnings is natural log of real annual labor earnings. The 18 NAICS aggregate industries are defined following the North American Industrial Classification System. Coding of CPS industry data (indly) into NAICS industries follows Table C-5 of Pollard (2019). Definitions follow equation (10).

sorting and segregation across industries have been separated into distinct terms. Adding the 18.2% with the sorting and segregation effects yields 40.3%, which is very similar to the 40.5% in Table 2. While it is not an identity that the marginal contribution of industry in Table 2 is equal to the industry pay premia in Table 4 (the covariance structures underlying the two tables are different), they are similar in magnitude.

The person characteristics, sorting, and segregation effects in Table 4 reflect the contribution of both age by education effects and occupation effects. We provide guidance about the relative contribution of age by education vs occupation effects in Table 5. Focusing on results using NAICS sectors, age by education accounts for two-thirds (11.8% of 18.2%) of the within-industry person characteristics contribution to variance growth (far right column of Table 5), with the remainder accounted for by occupation and the covariance between age by education with occupation. For between-industry segregation, more than half (8.4% of 14.8%) is accounted for by the covariance between age by education and occupation, with the remainder accounted for by age by education and occupation. For between-industry sorting, almost three-quarters (5.3% of 7.3%) is accounted for by the covariance between industry and occupation, with the other one-quarter accounted for by the covariance between industry and age by education. In short, both age by education and occupation are important contributing factors for the contribution of within-industry person characteristics, between-industry segregation, and between-industry sorting.

It is also worth emphasizing that the contribution of occupation is mostly via sorting and segregation effects between industries. Within-industry occupation effects for 6.3% of rising dispersion including both the direct and covariance effects. Between-industry segregation effects from occupation contribute 10.9% ($= 8.4\% + 2.5\%$) including both direct and covariance effects. Between-industry sorting effects from occupation account for 5.3%. In total, the occupational sorting and segregation across industries explains 16.2% ($= 10.9\% + 5.3\%$) of the rise in inequality. The within-industry contribution of occupations contributes 6.3% ($= 4.1\% + 2.2\%$) to rising inequality. In sum, occupations explain 22.5% ($= 16.2\% + 6.3\%$) of the increase in inequality.



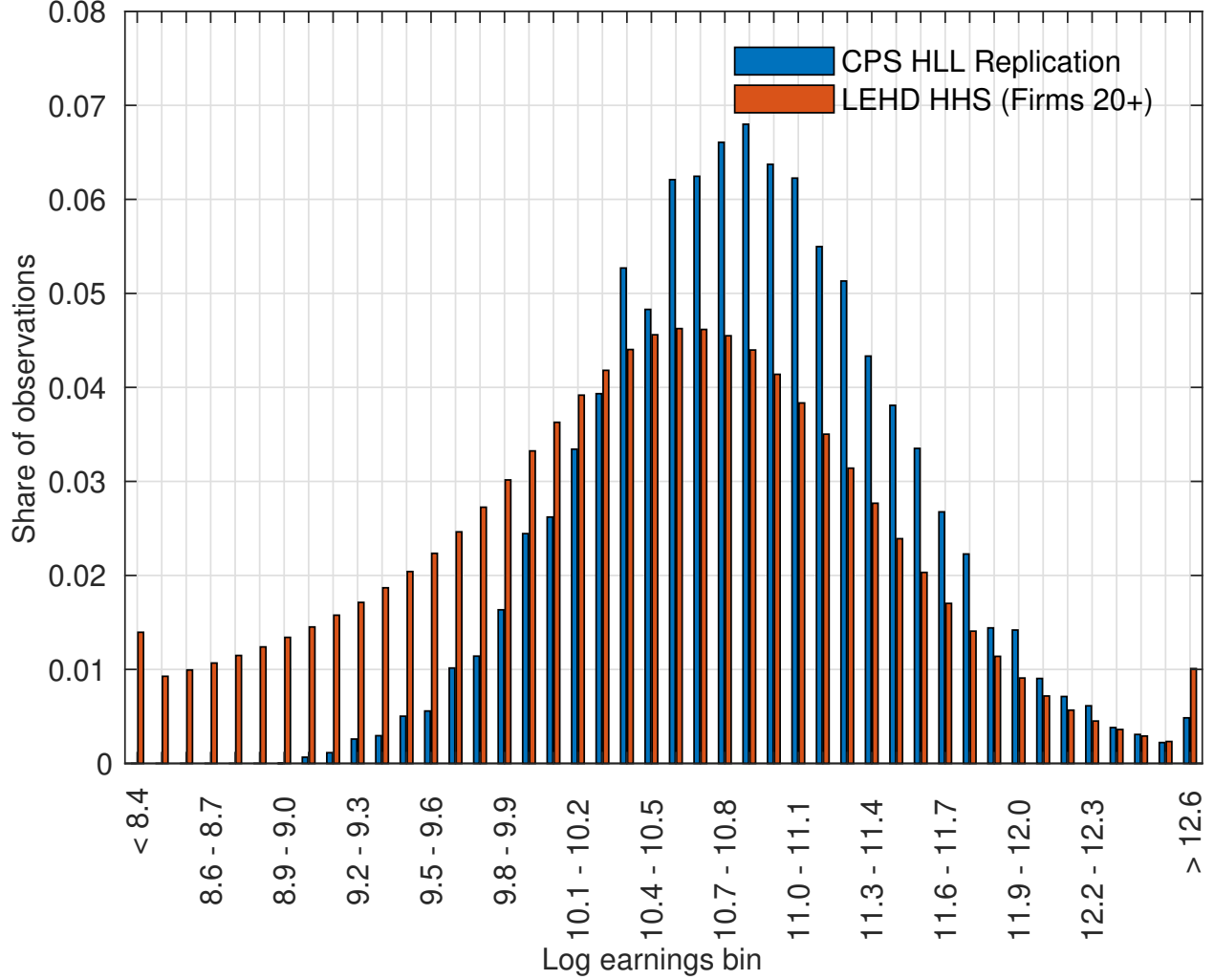
4 Adjusting for sample selection differences used in the analysis of survey and administrative data

We seek to understand what underlies the different effects between the CPS data as estimated by HLL and the LEHD data as estimated by HHS. The first step is to ensure the CPS and the LEHD samples are similar, and the second step (described in Section 5) is to create a linked dataset that will allow us to examine the effects of differences in how earnings and industry are measured for a given individual.

Figure 1 shows that the earnings variance trends in the CPS used by HLL and the LEHD used by HHS are very different in levels. The variance of HLL CPS earnings is 0.330 in 2018 while the variance off HHS LEHD earnings is 0.911 in 2018. Figure 2 shows the distributions of the HLL CPS earnings and the HHS LEHD earnings are very different. The HHS LEHD has a much larger left tail than the HLL CPS. The HLL CPS data is bottom coded at annual earnings=\$7840 (weeks worked > 49, usual hours > 40, and a real hourly wage > \$4 using a CPI 2018=100 deflator), whereas the HLL LEHD data is bottom coded at annual earnings =\$3770 (weeks worked > 13 and a real hourly wage > \$7.25 using a PCE 2013=100 deflator). Figures 1 and 2 clearly show that HLL and HHS are not analyzing increasing inequality using the same annual earnings distributions.

Table 6 shows the eight identifiable differences in the HLL CPS and the HHS LEHD data. The middle column of Table 6 shows how we reconcile these differences and create a “common-coded”

Figure 2: PDFs of HLL CPS-ASEC and HHS LEHD earnings, all years pooled



sample for both the CPS and the LEHD. Common coding is based on: (i) Earnings: exclude self-employment and farm earnings from the CPS; (ii) Age: change 26-65 to 20-60 in the CPS; (iii) Top coding: change 1% annual truncation to 0.001% pooled censoring in the CPS; (iv) Bottom coding: change \$7840 bottom code to \$3770 in the CPS; (v) Government jobs: exclude, when identified, government jobs in the CPS; (vi) Deflator: change 2018=100 CPI to 2013=100 PCE in the CPS; (vii) Firm Size restrictions: relax firm size > 20 in the LEHD; (viii) Years: change HLL's 1975-2018 to HHS's 1996-2002, 2004-2010, and 2012-2018.¹⁰

Figure 3 shows the effect of common coding on the CPS and the LEHD. Common coding de-

¹⁰Note that we use the IPUMS CPS microdata as compiled by Flood et al. (2021) to supplement the replication data that HLL posted to the *Journal of Economic Perspectives* website as not all the variables necessary for common coding were in HLL.

Table 6: Common coding of HLL CPS-ASEC and HHS LEHD data

Criterion	HLL CPS-ASEC	Common coding	HHS LEHD
Earnings	Wage & salary + self employment + farm	Wage & salary	sage & salary
Age	26-65	20-60	20-60
Top coding	Truncate top 1% each year (by gender)	Mean of top 0.001% pooled all years	Mean of top 0.001% pooled all years
Bottom coding	Weeks worked > 49 & usual hours > 40 & real hourly wage > \$4 & annual real earnings > \$7840	Annual real earnings > \$3770	Annual real earnings > \$3770
Government jobs	Include all government jobs	Exclude longest job last year that is government	Exclude all government jobs
Deflator	CPI (2018=100)	PCE (2013=100)	PCE (2013=100)
Firm size	Any	Any	Firm Size > 20
Years	1975-2018	1996-2002, 2004-2010, & 2012-2018	1996-2002, 2004-2010, & 2012-2018

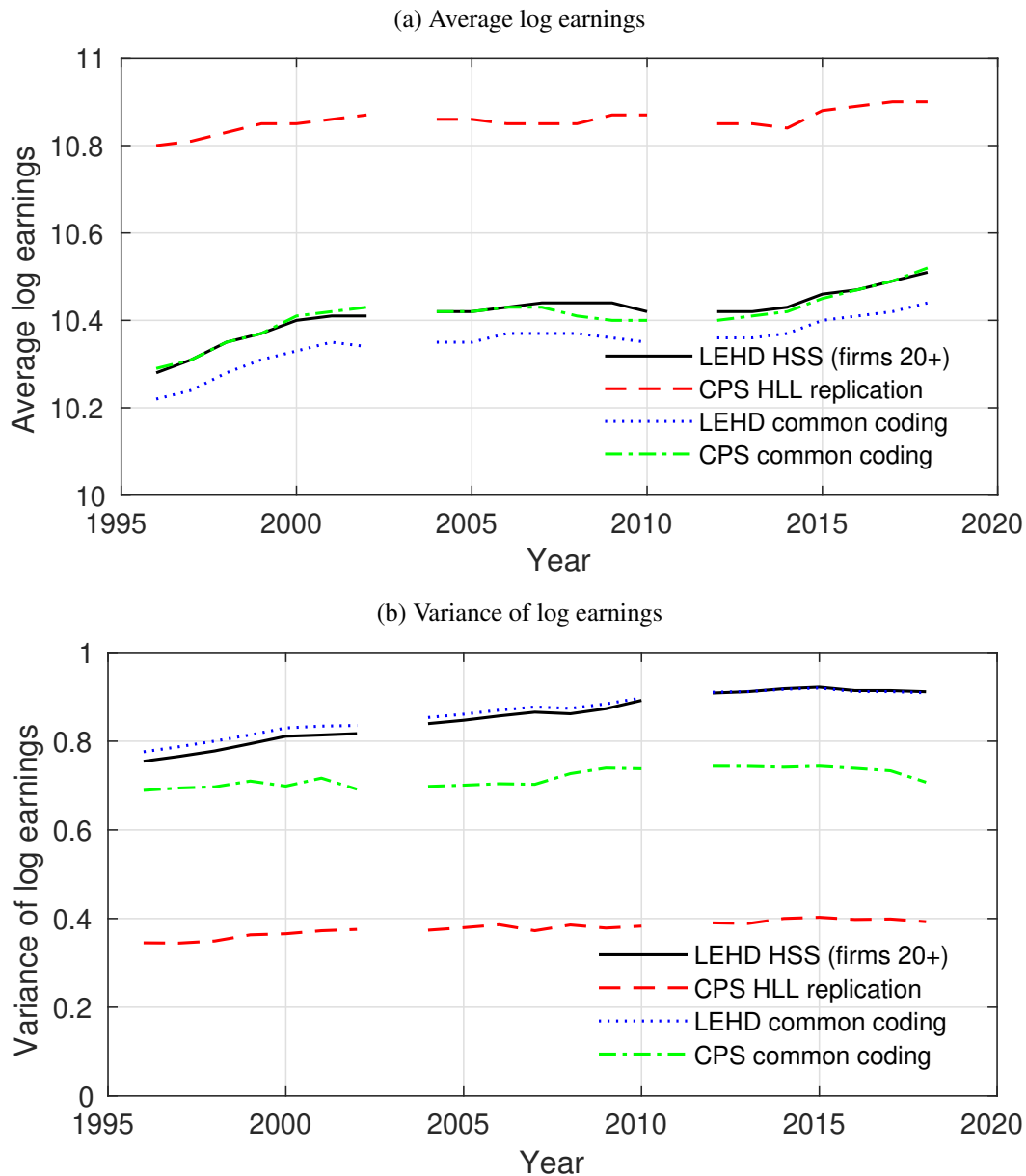
creases CPS mean earnings and increases CPS earnings variance from HLL levels. The largest contributor to these changes is the bottom coding, where we add many lower earnings individuals to the HLL data.¹¹ Common coding has a small decrease on LEHD mean earnings and little if any effect on LEHD variance from HHS levels.

Figure 4 shows the distributions of the common-coded CPS earnings and the common-coded LEHD earnings. The distributions are now more similar. The common-coded LEHD has a slightly wider left tail than the common-coded CPS, which suggests that the common-coded LEHD measures more low earnings persons than does the common-coded CPS. This is consistent with the Abraham et al. (2013) finding that low earnings is one characteristic predicting having an LEHD earnings record and not being measured as employed in the CPS.

Figures 1 and 2 show us that HLL and HSS analyzed different earnings distributions. Figure 4 shows us that the common-coded CPS and the common-coded LEHD have similar earnings distributions. But as we will show in the next Section, common coding does not substantially change

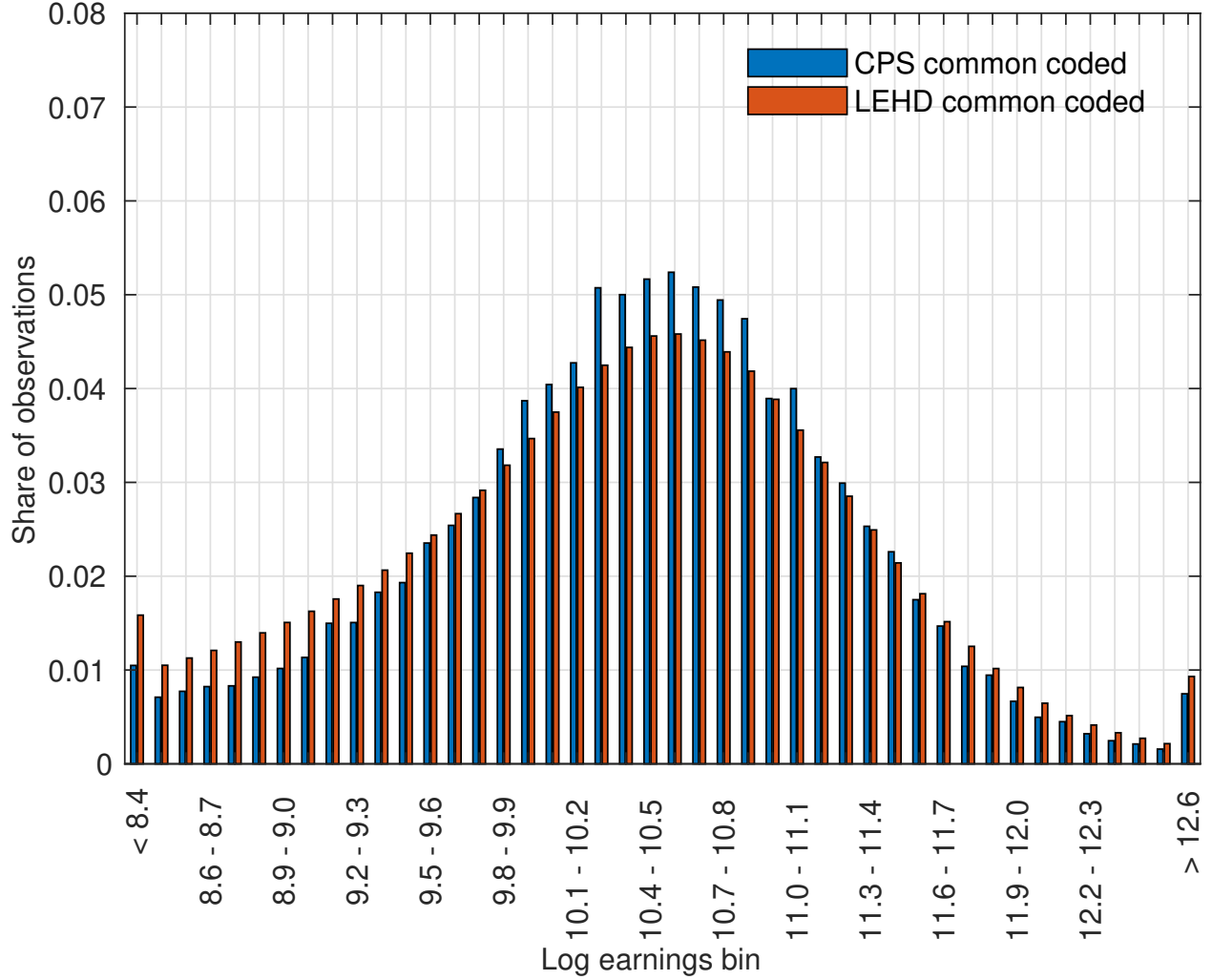
¹¹Appendix Figure A1 shows the effects, one-by-one, of the common coding on the HLL data.

Figure 3: Mean and variance of HLL CPS-ASEC, HHS LEHD, common-coded CPS-ASEC, and common-coded LEHD earnings, by year



the between-industry contribution to variance growth. The between-industry contribution to variance growth in the common-coded CPS is still dramatically below that estimated by HHS. To try to further understand this, we need to link the common-coded CPS and the common-coded LEHD individual-level microdata.

Figure 4: PDFs of common-coded CPS-ASEC and common-coded LEHD earnings, all years pooled



5 A linked CPS-LEHD dataset

5.1 Merging the CPS and the LEHD

The Census Bureau has attached Protected Identification Keys (PIKs) to the CPS-ASEC for survey years since 1996. PIKs are the Census Bureau's unique individual identifier. Knowing the PIK and the earnings reference year allows us to link the CPS-ASEC to the annualized version of the LEHD.

Not every record in the CPS-ASEC has a PIK attached. As noted by Bollinger et al. (2019), the Census Bureau changed its consent protocol to link respondents to administrative data beginning with the survey year 2006 CPS-ASEC. Similar to Bollinger et al. (2019), we find that the PIK rate for our common-coded CPS in the 1996 to 2004 reference years is between 60 and 80 percent, with the

exception of 2000, and is then between 88 and 92 percent for reference years 2005 to 2018. The PIKs are poor quality for earnings reference year 2000, and we do not link the 2000 CPS-ASEC with the LEHD.¹²

The fact that not every CPS-ASEC record has a PIK highlights the need to adjust the CPS ASEC weights with a propensity score adjustment. We have done so, running year-specific logistic regressions where the dependent variable is equal to 1 if the CPS-ASEC record has a PIK, and 0 otherwise. The explanatory variables are dummy variables for CPS state, age, gender, race, Hispanic origin, foreign born, marital status, and education. We output the predicted values from these regressions for each person-year observation, and then adjust the CPS-ASEC weights in the matched sample by dividing the original weight by the predicted value.

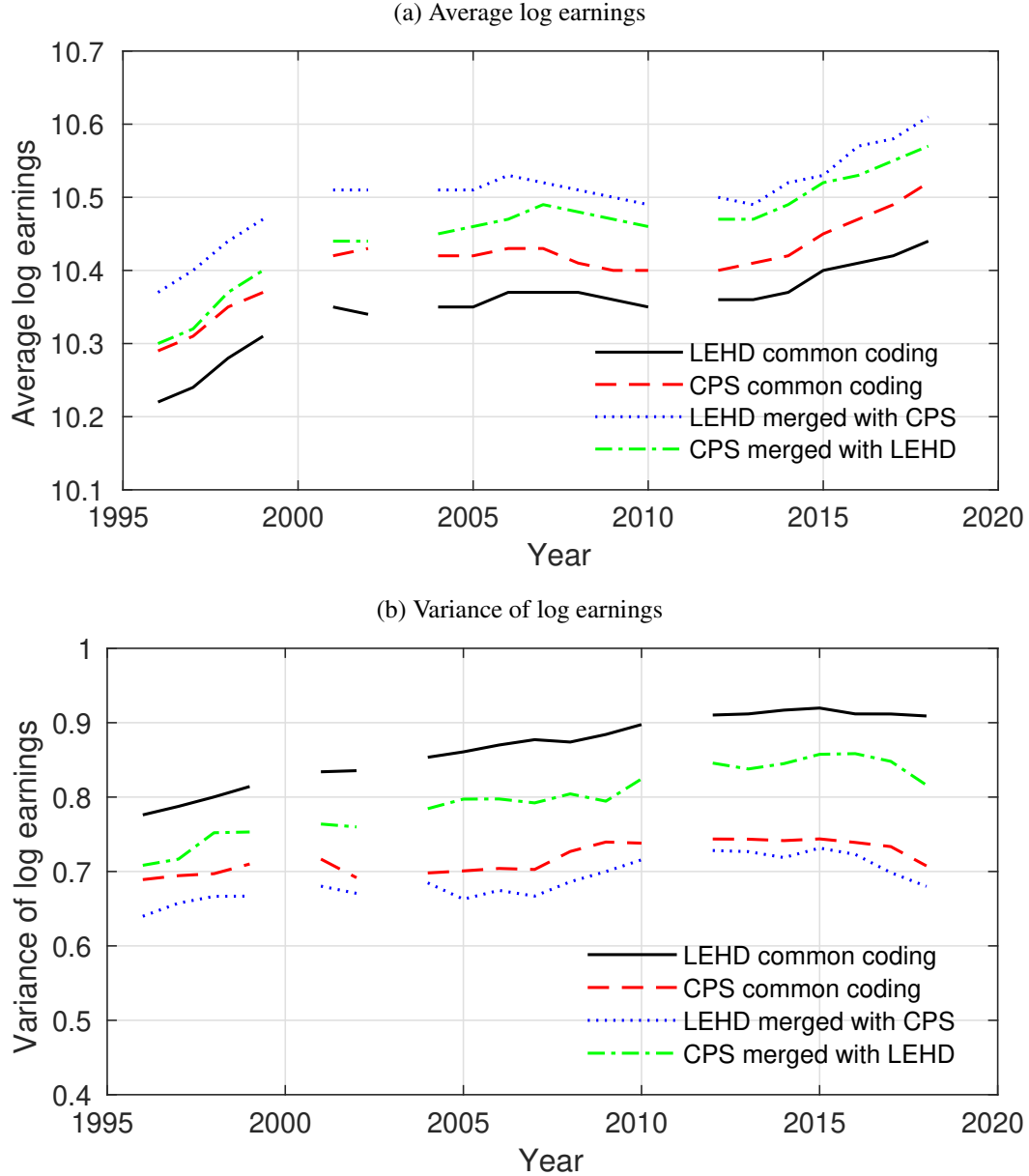
We then merge the PIKed common-coded CPS-ASEC data with the common-coded LEHD data. We only keep observations where an individual is in both the CPS-ASEC and in the LEHD.¹³ We run another set of year-specific logistic regressions where the dependent variable is “1 if PIKed CPS-ASEC matches to the LEHD, 0 otherwise.” The explanatory variables are dummy variables for CPS age, gender, race, Hispanic origin, foreign born, marital status, and education. Dummy variables for state are not included in this propensity score model since the CPS-ASEC is national but the common-coded LEHD is 18 states. We output the predicted values from these regressions for each person-year observation, and then adjust the (already adjusted) CPS ASEC weights in the matched sample by dividing by the predicted value. All statistics from the linked CPS-LEHD data will use these twice-adjusted propensity score weights.

Two notes about the CPS-LEHD linked data warrant mention. First, the linked CPS-LEHD microdata contains the AKM parameters that were estimated on the full LEHD data with 946 million person-year observations. This will be important later. Second, the linked CPS-LEHD data has a different earnings distribution than the two source datasets we linked. This is evident in Figure 5. Both the CPS and the LEHD in the linked CPS-LEHD have higher mean earnings and lower earnings

¹²The year-specific PIK rates for the common-coded CPS-ASEC are given in Appendix Figure A3.

¹³We do not analyze the off-diagonal cells where an individual who has an earnings record in the common-coded LEHD is not employed in the common-coded CPS, nor where an individual who is employed in the common-coded CPS has no corresponding earnings record in the common-coded LEHD. It is not correct to interpret the off-diagonals of the CPS-LEHD matching exercise as reflecting differences in employment. Our LEHD dataset is built from administrative data from 18 states, so there are many individuals in the national CPS with no earnings record in the 18-state LEHD. The LEHD is a universe whereas the CPS is a survey, so there are many individuals in the LEHD who are not sampled in the CPS.

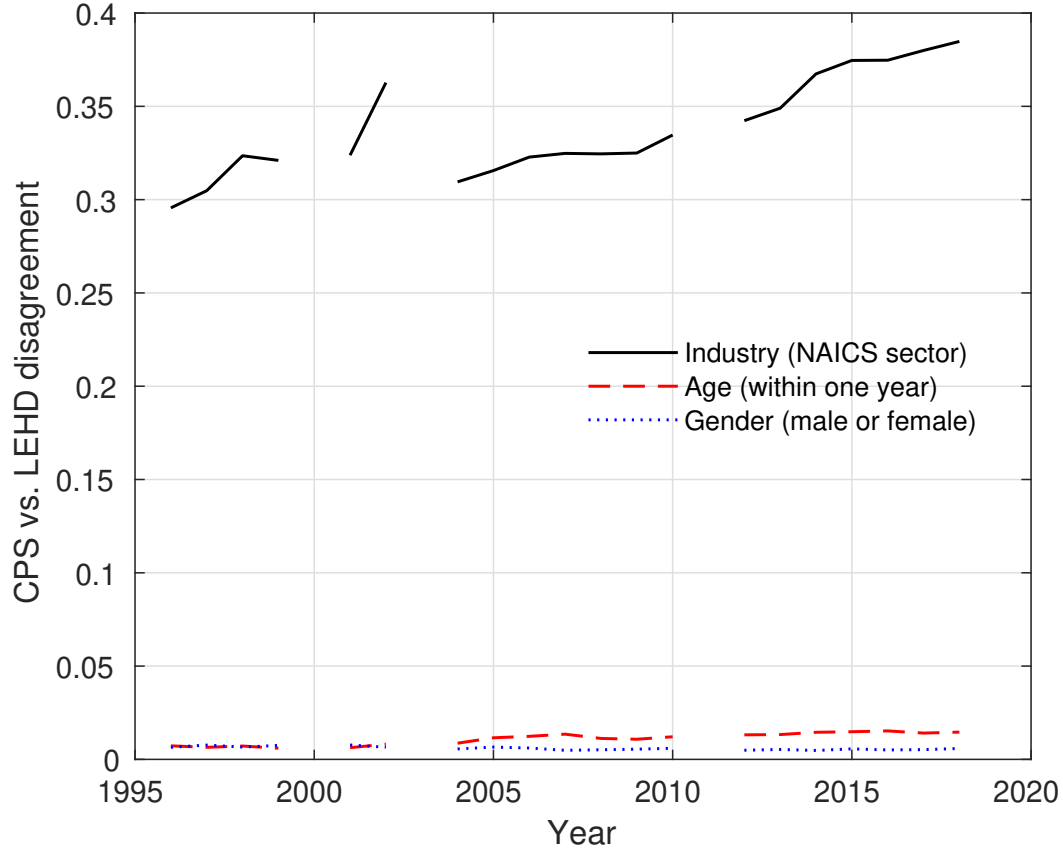
Figure 5: Mean and variance of HLL CPS-ASEC, HHS LEHD, common-coded CPS-ASEC, and common-coded LEHD earnings, by year



variance than they do in the common-coded data.¹⁴

¹⁴To illustrate the similarities and differences in earnings in the CPS and LEHD in the CPS-LEHD linked data, Appendix Figure A4 shows the equivalent of Figure 4 from the linked data. The two earnings distributions are roughly similar, but Appendix Figure A5 illustrates substantial differences when computing the pdf of CPS minus LEHD earnings at the individual level. In Appendix Figure A5, there is substantial mass near zero, but there are clear differences in the tails. Appendix Figure A6 provides a related perspective on differences in the tails. As in Bollinger et al. (2019) we find “trouble in the tails.” Earnings per worker are low in the CPS relative to the administrative data for high earnings individuals and high in the CPS relative to the administrative data for low earnings individuals. Bollinger et al. (2019) emphasized non-response bias which we find plays some role as can be seen in Figure A6. However, even after removing imputed cases the pattern in the tails remains. These earnings differences in the tails help explain why the variance of

Figure 6: Linked CPS-ASEC and LEHD differences



Notes: Age disagreement = 0 if CPS age = LEHD age or if CPS age = LEHD age + 1, age disagreement = 1 otherwise. Industry disagreement is defined using a NAICS measure of industry with 18 categories.

5.2 Measurement differences in the linked CPS-LEHD Data

We take a brief divergence here and ask about measurement differences in the linked CPS-LEHD data. Figure 6 shows the disagreement between age and gender in the CPS and the LEHD.¹⁵ Disagreement on gender is always less than 1%. Disagreement on age is less than 2%, with evidence of an upward trend from 0.7% in the 1996-2002 time period to 1.4% in the 2012-2018 time period. More striking is industry disagreement in the CPS and the LEHD, where industry is measured as 18 sectors following Pollard (2018). 30%-40% of persons disagree on industry sector, with an upward trend.

This large disagreement on NAICS industry sector in the linked CPS-LEHD data suggests that differences in the industry variable could be one source for why the CPS and LEHD have different

earnings in the common-coded linked CPS are lower than the variance in the common-coded linked LEHD. Because the literature on inequality using the CPS does not exclude imputed cases, we keep them in our analysis.

¹⁵Disagreement on age is defined as CPS age < LEHD age or if CPS age > LEHD age + 1, since CPS age may be asked in February, March, or April of the following year.

between-industry contributions to variance level and growth. The LEHD industry measures are of high quality from the establishment-level programs at BLS and Census. These agencies have a strong incentive to track industry carefully as their detailed industry statistics are critical for the NIPAs and productivity statistics. CPS industry is based on self-reported descriptions by the respondent that are coded into sectors. Limitations of the CPS industry codes are well-known (e.g., Mellow and Sider, 1983 and Dey et al. (2010)).¹⁶

6 Increasing inequality in the linked CPS-LEHD dataset

6.1 Within and between-industry variance decompositions

We begin our analysis of inequality in the linked CPS-LEHD data by focusing on within and between-industry contributions. We start here given the large differences discussed above in industry contributions from the CPS and LEHD datasets. Column 1 of Table 7 presents the variance decomposition using our minor modifications of HLL's CPS-ASEC sample (this is the same sample used in Tables 2 to 5). Column 2 presents the variance decomposition from the common-coded CPS. Comparing columns 1 and 2, the between-industry variance level increases, from 7.5% to 13.9% in 2012-2018, and the between-industry variance growth increases, from 23.1% to 29.3%. Column 3 presents the variance decomposition from the linked CPS-LEHD data. Compared to column 2 (the common-coded CPS), the between-industry variance level increases only slightly, from 13.9% to 14.7% in 2012-2018, but the between-industry variance growth increases substantially, from 29.3% to 46.0%. As we discuss below in Section 7, several factors underlie this finding. Details are below but one key observation from column 3 is that using the linked CPS-LEHD data increases the growth in earnings inequality substantially in the direction of the greater increase in dispersion in the administrative data (from 0.035 in the common-coded CPS to 0.050 in the linked data).

Column 4 uses the same CPS-LEHD linked sample as column 3, but uses a measure of NAICS sector from the LEHD rather than from the CPS. This increases the between-industry variance growth from 46.0% to 52.2%. Column 5 uses a four-digit NAICS measure with 299 categories from the

¹⁶Appendix Table A3 presents evidence on the extent of disagreement by specific sectors. Four sectors stand out as having especially low agreement. Wholesale Trade, Information, Educational Services, and Other Services all have less than a 50 percent agreement between CPS and LEHD industry codes. As we will see below, the Information sector is especially important in accounting for discrepancies between CPS tabulations using an 18 vs 50 state sample.

Table 7: Within and between-industry variance decompositions

Data	(1) CPS	(2) CPS	(3) Linked CPS-LEHD	(4) Linked CPS-LEHD	(5) Linked CPS-LEHD	(6) Linked CPS-LEHD	(7) LEHD
Sample	HLL JEP	Common coded	Common coded	Common coded	Common coded	Common coded	Common coded
Earnings measure	CPS	CPS	CPS	CPS	CPS	LEHD	LEHD
Industry measure	CPS 18	CPS 18	CPS 18	LEHD 18	LEHD 299	LEHD 299	LEHD 299
<i>Variance level 1996-2002</i>							
Earnings variance	0.360	0.703	0.667	0.667	0.667	0.746	0.811
Within-industry	94.1%	86.9%	87.6%	91.7%	82.5%	78.3%	79.6%
Between-industry	5.9%	13.1%	12.4%	8.3%	17.5%	21.7%	20.4%
<i>Variance level 2012-2018</i>							
Earnings variance	0.397	0.738	0.717	0.717	0.717	0.845	0.914
Within-industry	92.5%	86.1%	85.3%	88.6%	79.1%	73.1%	74.6%
Between-industry	7.5%	13.9%	14.7%	11.4%	20.9%	26.9%	25.4%
<i>Change from 1996-02 to 2012-18</i>							
Variance growth	0.037	0.035	0.050	0.050	0.050	0.100	0.103
Within-industry	76.9%	70.7%	54.0%	47.8%	34.5%	33.8%	35.5%
Between-industry	23.1%	29.3%	46.0%	52.2%	65.5%	66.2%	64.5%

Notes: The rows titled “Data” and “Sample” indicate the data used for the variance decomposition (see text for description). The row titled “Earnings measure” indicates whether CPS or LEHD earnings is used in the decomposition. In the row titled “Industry measure,” “CPS 18” refers to 18 NAICS sectors from the CPS-ASEC (recoding CPS-ASEC variable indly following Table C-5 of Pollard 2019), “LEHD 18” refers to NAICS sectors from the LEHD, and “LEHD 299” refers to 299 4-digit NAICS industries from the LEHD. Definitions follow equation (8).

LEHD rather than the sector level with 18 categories. This has large effects on the between-industry variance level (from 11.4% to 20.9% in 2012-2018) and also has large effects on the between-industry variance growth, from 52.2% to 65.5%. Column 6 changes the earnings measure from the CPS to the LEHD. The between-industry variance level increases (from 20.9% to 26.9% in 2012-2018), but the between-industry variance growth is unaffected. Note the large increase in variance growth between columns 5 and 6, from 0.050 when using the CPS earnings measure to 0.100 when using the LEHD earnings measure. Finally, in column 7, we show the variance decomposition using the full common-coded LEHD with 946 million person-year observations rather than the CPS-LEHD linked sample. The contribution of the between-industry variance to total variance levels and growth from the full LEHD match the contribution from the weighted CPS-LEHD linked sample very closely. We regard Table 7 as showing a remarkable result. The between-industry variance growth in the full LEHD (18-states) is 64.5%, and we can essentially replicate this statistic from our linked CPS-LEHD data when using CPS earnings and a LEHD 4-digit industry measure.

6.2 A full variance decomposition of the human capital earnings equation

Table 8 shows the variance decomposition with columns corresponding to Table 7 (there is no column 7 with results from the full LEHD because the full LEHD does not have measures of the CPS explanatory variables Z). We are primarily interested in columns (5)-(6) that use the linked, common-coded CPS-LEHD data with the detailed LEHD industry codes. Column 5 shows results using CPS earnings, and column 6 shows results using LEHD earnings. Before turning to these differences, one striking finding is that moving from CPS to LEHD industry codes substantially reduces the unexplained portion of the increase in CPS earnings inequality (compare 38.8% in column (3) to either 25.9% or 28.5% in columns (4) and (5)).

The results from columns (5) and (6) have some important similarities and differences. One key similarity that we already know from Table 7 is that the overall between-industry contribution to rising dispersion is very similar using either CPS or LEHD earnings and is very large. Another similarity is that person characteristics within industries contribute only modestly to rising dispersion. Person characteristics (inclusive of occupation) are more important through their contributions to between-industry sorting and segregation. However, the relative importance of industry premia and segregation are very different when using CPS or LEHD earnings. Segregation is much more important using CPS

Table 8: Variance decomposition of the human capital earnings equation

	(1)	(2)	(3)	(4)	(5)	(6)
Data	CPS	CPS	Linked CPS-LEHD	Linked CPS-LEHD	Linked CPS-LEHD	Linked CPS-LEHD
Sample	HLL JEP	Common coded	Common coded	Common coded	Common coded	Common coded
Earnings measure	CPS	CPS	CPS	CPS	CPS	LEHD
Industry measure	CPS 18	CPS 18	CPS 18	LEHD 18	LEHD 299	LEHD 299
<i>Variance level 1996-2002</i>						
Earnings variance	0.360	0.703	0.667	0.667	0.667	0.746
Within-industry:	94.1%	86.9%	87.6%	91.7%	82.5%	78.3%
Age, educ. & occ.	28.5%	24.4%	27.7%	27.9%	22.2%	18.7%
Residual	65.6%	62.5%	60.0%	63.8%	60.3%	59.6%
Between-industry:	5.9%	13.1%	12.4%	8.3%	17.5%	21.7%
Segregation	3.3%	2.2%	2.2%	2.0%	4.1%	3.1%
Pay premia	6.0%	11.1%	8.7%	4.3%	8.2%	12.2%
Sorting	-3.4%	-0.1%	1.5%	2.0%	5.2%	6.4%
<i>Variance level 2012-2018</i>						
Earnings variance	0.397	0.738	0.717	0.717	0.717	0.845
Within-industry:	92.5%	86.1%	85.3%	88.6%	79.1%	73.1%
Age, educ. & occ.	27.5%	24.5%	26.8%	27.5%	21.1%	18.1%
Residual	65.0%	61.6%	58.5%	61.2%	58.0%	55.0%
Between-industry:	7.5%	13.9%	14.7%	11.4%	20.9%	26.9%
Segregation	4.4%	3.7%	4.2%	3.9%	6.1%	4.5%
Pay premia	5.5%	8.4%	7.0%	3.9%	7.5%	13.4%
Sorting	-2.4%	1.8%	3.5%	3.6%	7.3%	9.1%
<i>Change from 1996-02 to 2012-18</i>						
Variance growth	0.037	0.035	0.050	0.050	0.050	0.100
Within-industry:	76.9%	70.7%	54.0%	47.8%	34.5%	33.8%
Age, educ. & occ.	18.2%	27.0%	15.1%	21.9%	6.0%	13.3%
Residual	58.8%	43.6%	38.8%	25.9%	28.5%	20.6%
Between-industry:	23.1%	29.3%	46.0%	52.2%	65.5%	66.2%
Segregation	14.8%	34.9%	31.5%	28.5%	31.7%	14.8%
Pay premia	1.0%	-45.8%	-14.9%	-1.4%	-1.2%	22.0%
Sorting	7.3%	40.2%	29.5%	25.1%	35.1%	29.4%

Notes: The rows titled “Data” and “Sample” indicate the data used for the variance decomposition (see text for description). The row titled “Earnings measure” indicates whether CPS or LEHD earnings is used in the decomposition. In the row titled “Industry measure,” “CPS 18” refers to 18 NAICS sectors from the CPS-ASEC (recoding CPS-ASEC variable indly following Table C-5 of Pollard (2019)), “LEHD 18” refers to NAICS sectors from the LEHD, and “LEHD 299” refers to 299 4-digit NAICS industries from the LEHD. See equation (10) for definitions.

earnings (31.7% compared to 14.8%) while industry pay premia is much more important using LEHD earnings (22.0% compared to -1.2%). Another important difference is the contribution of unexplained factors is larger using the CPS compared to the LEHD earnings. In interpreting these similarities and differences in percent contributions, it is also important to remember that increase in dispersion in the CPS earnings measure is only about half that for the LEHD earnings measure.

6.3 Unexplained contribution in the CPS vs. the LEHD data

An important factor in reconciling the contributing factors to rising earnings inequality between the CPS and LEHD data is the substantially larger role of unexplained factors in the CPS when using observable person characteristics. Several components are at work here. As highlighted in our discussion of Table 8, the unexplained contribution to variance growth is reduced substantially when using industry codes from the LEHD. It is reduced further in the linked CPS-LEHD (column 6 of Table 8) when using LEHD earnings along with CPS observable person characteristics and detailed LEHD industry codes. Still, compared to the findings in Song et al. (2019) and HHS, the unexplained component of rising earnings inequality is much greater using CPS observable person characteristics than using the person and firm characteristics from an AKM decomposition of earnings. In this Section, we compare and contrast the latter with the CPS observable person characteristics.

The AKM earnings equation is stated above in equation (1). We have estimated the person effects, firm effects, and effects of observable characteristics for each 7-year time period from the full 946 million observation common-coded LEHD, and we have used these estimates to create the industry-enhanced variance decomposition reported in Table 9. These estimated AKM components are also in the CPS-LEHD linked data, which allows us to create the industry-enhanced variance decomposition from the linked CPS-LEHD data. These variance decompositions are also reported in Table 9.

The industry enhanced variance decompositions reported in Table 9 are quite similar for the linked data and the full LEHD data. Between-industry variance growth is 66.2% in the linked CPS-LEHD and is 64.5% in the full LEHD (and is 61.9% in HHS). Within-industry between-firm variance growth is 22.7% in the linked CPS-LEHD and is 24.0% in the full LEHD (and is 23.1% in HHS). Within-industry between-person variance growth is 11.1% in the linked CPS-LEHD and is 11.6% in the full LEHD (and is 14.9% in HHS). The industry segregation, pay premium, and sorting terms are also amazingly similar across datasets. Looking at variance growth, industry segregation is 26.9% in the

Table 9: Variance decomposition of the AKM earnings equation

	Linked CPS-LEHD			Common-coded LEHD		
	1996-02	2012-18	Growth	1996-2002	2012-2018	Growth
Earnings variance	0.746	0.845	0.100	0.811	0.914	0.103
Between-firm:	18.7%	19.1%	22.7%	17.5%	18.3%	24.0%
Segregation	9.7%	9.9%	11.0%	9.2%	9.6%	12.1%
Pay premia	6.4%	5.9%	2.3%	6.1%	5.8%	4.1%
Sorting	2.5%	3.3%	9.3%	2.3%	2.9%	7.8%
Between-industry:	21.7%	26.9%	66.2%	20.4%	25.4%	64.5%
Segregation	7.4%	9.7%	26.9%	6.9%	9.0%	25.9%
Pay premia	4.1%	4.8%	9.6%	4.1%	4.6%	9.3%
Sorting	10.2%	12.5%	29.6%	9.5%	11.7%	29.2%
Within-firm:	59.7%	54.0%	11.1%	62.0%	56.4%	11.6%
Person effect & obs.	47.6%	44.0%	17.8%	46.5%	42.7%	13.2%
Residual	12.1%	9.9%	-6.6%	15.6%	13.6%	-1.7%

Notes: Definitions follow Appendix equation (A5). “Between-firm” measures between-firm, within-industry dispersion. “Person effect & obs.” refers to heterogeneity attributed to the person effect and from observable characteristics in an AKM regression as described in equation (A5).

linked CPS-LEHD, 25.9% in the full LEHD, and is 25.2% in HHS. The industry pay premium is 9.6% in the linked CPS-LEHD, 9.3% in the full LEHD, and is 8.7% in HHS. Industry sorting is 29.6% in the linked CPS-LEHD, 29.2% in the full LEHD, and is 28.0% in HHS.

It is instructive to compare the results from Table 9 to Table 8 more directly. In Table 10, we repeat columns 5 and 6 of Table 8, and we repeat components from Table 9 in the third column of Table 10. All three columns of Table 10 use the linked CPS-LEHD data and all three use the detailed industry codes from LEHD.

The contribution of total between-industry is, by construction, identical in the right two columns of Table 10, and is also very similar in the first column. However, the allocation of the total between-industry contribution into segregation, sorting, and pay premium differs substantially on some dimensions. At the core of these differences is the difference between using observable person characteristics in the human capital equation in the middle column compared to using person and firm effects from an AKM decomposition in the last column. Even though the person effects in the last column reflect only the within-firm contribution of such effects, this component still accounts for more than (or equal to) the within-industry observable person characteristics from the CPS. If we add the within-firm person components and the within-industry between-firm components from the AKM earnings

Table 10: Variance decomposition using an earnings equation: human capital vs. AKM

Earnings measure Specification	(5) CPS Human capital	(6) LEHD Human capital	(7) LEHD AKM
<i>Variance level 1996-2002</i>			
Earnings variance	0.667	0.746	0.746
Within-industry:	82.5%	78.3%	78.3%
Age, educ. & occ.	22.2%	18.7%	
Person effect & obs.			47.6%
Residual	60.3%	59.6%	12.1%
Between-firm			18.7%
Between-industry:	17.5%	21.7%	21.7%
Segregation	4.1%	3.1%	7.4%
Pay premia	8.2%	12.2%	4.1%
Sorting	5.2%	6.4%	10.2%
<i>Variance level 2012-2018</i>			
Earnings variance	0.717	0.845	0.845
Within-industry:	79.1%	73.1%	73.1%
Age, educ. & occ.	21.1%	18.1%	
Person effect & obs.			44.0%
Residual	58.0%	55.0%	9.9%
Between-firm			19.1%
Between-industry:	20.9%	26.9%	26.9%
Segregation	6.1%	4.5%	9.7%
Pay premia	7.5%	13.4%	4.8%
Sorting	7.3%	9.1%	12.5%
<i>Change from 1996-02 to 2012-18</i>			
Variance growth	0.050	0.100	0.100
Within-industry:	34.5%	33.8%	33.8%
Age, educ. & occ.	6.0%	13.3%	
Person effect & obs.			17.8%
Residual	28.5%	20.6%	-6.6%
Between-firm			22.7%
Between-industry:	65.5%	66.2%	66.2%
Segregation	31.7%	14.8%	26.9%
Pay premia	-1.2%	22.0%	9.6%
Sorting	35.1%	29.4%	29.6%

Notes: Linked CPS-LEHD dataset, common-coded sample. 299 4-digit NAICS industries. Columns 5 and 6 are copied directly from Table 8. Column 7 is copied from Table 9.

regression, this difference is substantially larger than the observable person characteristics effect from the CPS. This greater role for within-industry contributions in the far right column is not coming from the between-industry contribution but rather the unexplained contribution is much smaller in the far right column compared to the middle column.

Looking at variance levels in Table 10, the contribution of observable person characteristics differs dramatically using the human capital earnings equation relative to the person effects using the AKM earnings equation. Using the human capital earnings equation, the within-industry variation in the Z vector (age*education and occupation, multiplied by β) accounts for 18.1% to 22.2% of the earnings variance, whereas the within-firm person effects accounts for 44.0% to 47.6% of the earnings variance in the AKM earnings equation (and another 17.5% to 19.1% inclusive of the within-industry, between-firm effects). This difference is reversed for the unexplained contribution to the level of earnings variance. In the human capital earnings equation, 55.0% to 60.3% of the earnings variance is unaccounted for, whereas this is 9.9% to 15.6% in the AKM earnings equation.

Turning to the between-industry contribution and focusing on growth, the overall between-industry contribution in the latter two columns in Table 10 is the same by construction. Interestingly, sorting is basically identical whether using the human capital equation approach or the AKM earnings equation approach: the former is 29.4% and the latter is 29.6%. Segregation using the human capital equation approach is 14.8 percent of variance growth, whereas it is 26.9% of variance growth using the AKM equation approach. The industry pay premium is 22.0% in the human capital equation, versus 9.6% in the AKM equation. In other words, when accounting for the determinants of between-industry variance growth, the industry dummies are more important than $Z_{i,k}\beta_Z$ in the human capital equation, whereas the AKM individual fixed effects θ_i (plus observable characteristics $X\beta$) are more important than the industry mean of the AKM firm fixed effects in the AKM earnings equation.

An implication from Table 10 is that one can go pretty far with a hybrid approach based on administrative data on earnings, detailed high-quality industry codes from administrative data, and survey data on person characteristics such as age, education and occupation. By construction, the overall role of industry is the same, and its decomposition into sorting, segregation, and industry pay premia are broadly similar whether using observable person characteristics or AKM person effects.¹⁷ There is still substantial unexplained variation in earnings using such a hybrid approach but such unexplained variation is substantially diminished compared to using only survey data on earnings and

¹⁷We include a breakout of the contribution of age by education and occupation for the results in Appendix Table A4.

Table 11: Correlation matrix, all years pooled, linked CPS-ASEC and LEHD data

	Std. Deviation	CPS earnings	LEHD earnings	Age, educ. & occ. (AEO)	AEO ind. segregation	AEO ind. pay premium	AKM person & obs.	AKM firm segregation	AKM firm pay premium	AKM ind. segregation	AKM ind. pay premium	CPS AEO residual	LEHD AKM residual
CPS earnings	0.832	1.000	0.759	0.467	0.366	0.333	0.516	0.285	0.211	0.425	0.404	0.768	0.148
LEHD earnings	0.896		1.000	0.426	0.394	0.371	0.659	0.348	0.296	0.480	0.467	0.452	0.346
Age, educ. & occ. (AEO)	0.389			1.000	0.000	0.000	0.467	0.242	0.122	0.000	0.000	0.000	0.009
AEO ind. segregation	0.191				1.000	0.412	0.001	0.001	-0.003	0.818	0.709	0.000	-0.003
AEO ind. pay premium	0.255					1.000	-0.047	0.003	0.000	0.698	0.783	0.000	-0.006
AKM person & obs.	0.607						1.000	-0.007	-0.004	-0.005	-0.011	0.388	-0.029
AKM firm segregation	0.282							1.000	0.172	-0.001	-0.004	0.222	-0.008
AKM firm pay premium	0.222								1.000	-0.005	-0.004	0.120	-0.001
AKM ind. segregation	0.263									1.000	0.885	0.000	-0.006
AKM ind. pay premium	0.197										1.000	0.000	-0.005
CPS AEO residual	0.639											1.000	0.190
LEHD AKM residual	0.333												1.000

Notes: “Age, education, & occ. (AEO)” is defined as $Z_{i,k}\beta - \bar{Z}_k\bar{\beta}$. “AEO ind. segregation” is defined as $\bar{Z}_k\bar{\beta}$. “AEO ind. pay premium” is defined as $\text{Industry}_{i,k}\beta_3$. “AKM person & obs.” is defined as $\theta_i - \bar{\theta}_{j,k} + X_{i,t}\beta - \bar{X}_{j,k}\bar{\beta}$. “AKM firm segregation” is defined as $\bar{\theta}_k + \bar{X}_k\bar{\beta}$. “AKM firm pay premium” is defined as $\psi_{j,k} - \bar{\psi}_k$. “AKM ind. segregation” is defined as $\bar{\theta}_k + \bar{X}_k\bar{\beta}$. “AKM ind. pay premium” is defined as $\text{var}(\bar{\psi}_k)$. “CPS residual” is defined as $y_{i,k} - Z_{i,k}\beta - \text{Industry}_{i,k}\beta_3$. “LEHD AKM residual” is defined as $y_{i,j,k,t} - \theta_i - \psi_{j,k} - X_{i,t}\beta$.

industry.

To shed more light on these patterns, Table 11 presents the correlations between the various components contributing to rising earnings inequality as measured from the CPS human capital earnings relationships versus the AKM decomposition of earnings. While we find strong relationships between the CPS person and LEHD (AKM) person effects (a correlation of 0.467), it is apparent there is much more variation in the LEHD person effects (standard deviations of 0.607 and 0.389). Relatedly, we find that the CPS residual is strongly positively correlated with LEHD person effect, the LEHD within-industry between-firm segregation effect, and the LEHD firm pay premium (the correlations of 0.388, 0.222, and 0.120 respectively). The CPS decompositions attribute to the residual what the LEHD decompositions attribute to person, firm segregation, and firm pay premia effects. The correlation patterns in Table 11 help provide more guidance for the much larger role of person effects and firm effects in moving from column (6) to (7) in Table 10.

7 The role of occupation

From the CPS data alone and consistent with the HLL analysis, Table 5 shows that occupation plays a supporting but not dominant role in accounting for rising within and between-industry dispersion. The total contribution is 22.5% with 16.2% deriving from between-industry effects. The latter stems from the contribution of sorting effects (5.3%, high occupation workers increasingly sorting into high wage industries) and segregation through high wage occupation workers increasing segregated in specific industries (10.5%). An important component of these effects stem from rising within- and between-industry covariances between age by education and occupation effects. Moreover, overall age by education effects are more important both within and between industries.

As we have discussed there are limitations with CPS industry so it is interesting to quantify the role of occupation using LEHD industries. Results for this exercise using the CPS-LEHD linked sample are provided in Appendix Table A4. Whether we use CPS or LEHD earnings, when we use detailed LEHD industry the within-industry contribution of occupation decreases (from 4.1% in our HLL replication file to 0.4% using CPS earnings and 0.0% using LEHD earnings).¹⁸

¹⁸Interestingly, the overall contribution of age by education increases using detailed industries to 51.6% using CPS earnings and to 45.0% with LEHD earnings. Most of this occurs between industries, with sorting accounting for 19.9% using CPS earnings and 19.0% using LEHD earnings. Thus, adding detailed industries does not inherently lower the contribution of observable person characteristics.

Table 12: Variance decomposition using OEWS data on occupation and industry

	2002- 2003	2015- 2016	Change 2002-03 to 2015-16
Earnings variance	0.213	0.242	0.028
Within-industry:	49.0%	44.7%	12.2%
Occupation	41.4%	38.5%	16.0%
Residual	7.6%	6.2%	-3.8%
Between-industry:	51.0%	55.3%	87.8%
Segregation	10.9%	13.3%	31.3%
Pay premia	26.9%	24.1%	2.8%
Sorting	13.1%	17.9%	53.7%

Notes: OEWS sample for 287 4-digit industries and 22 occupations.

These inferences are limited by the relatively small number of occupations used by HLL as well as measurement error of occupations in the CPS. A concern might be is that these findings reflect high quality LEHD industries dominating occupation both because of quality and quantity issues. We don't think the CPS is the appropriate platform to investigate this issue. Instead, high quality occupation and industry data are available in the Occupational Employment and Wage Statistics (OEWS) from the Bureau of Labor Statistics. While we don't have access to the micro data, public domain data permit us to construct a dataset with 4-digit NAICS industries by 22 occupations in a consistent manner from 2002-16.¹⁹

Using the OEWS public domain industry by occupation data, Table 12 presents between- and within-industry decompositions along with the associated industry premia, sorting and segregation components of the within- and between-industry occupation and residual components. These results are based on estimating the following equation for the sub-intervals 2002-03 and 2015-16 (for occupations indexed by j and industries indexed by k , estimated on employment-weighted basis):

$$y_{j,k} = \text{Occupation}_{j,k}\beta_2 + \text{Industry}_{j,k}\beta_3 + \varepsilon_{j,k}. \quad (11)$$

¹⁹The public domain OEWS yields 287 4-digit NAICS industries that overlap with our 301 NAICS industries. All of the top 30 industries that account for most of the rising between-industry dispersion in HHS are available in the OEWS data. Further details on the construction of this dataset are provided in Haltiwanger, Hyatt, and Spletzer (2022).

Taking (employment-weighted) variances of both sides of equation (11) yields:²⁰

$$\begin{aligned}
 \underbrace{\text{var}(y_{j,k})}_{\text{earnings variance}} = & \underbrace{\text{var}(\text{Occupation}_{j,k}\beta_2 - \overline{\text{Occupation}_k\beta_2})}_{\text{within-industry dispersion from occupation}} + \underbrace{\text{var}(\overline{\text{Occupation}_k\beta_2})}_{\text{between-industry segregation}} + \\
 & \underbrace{\text{var}(\text{Industry}_{j,k}\beta_3)}_{\text{between-industry pay premia}} + \underbrace{2\text{cov}(\overline{\text{Occupation}_k\beta_2}, \text{Industry}_{j,k}\beta_3)}_{\text{between-industry sorting}} + \underbrace{\text{var}(\epsilon_{j,k})}_{\text{residual dispersion (within-industry)}}
 \end{aligned} \tag{12}$$

Several patterns stand out. First, the overwhelming fraction of the increase in dispersion in earnings in this industry by occupation data derives from increasing between-industry dispersion (87.8%). Second, the between-industry contribution is dominated by sorting effects (high wage workers increasingly sorting into high wage industries) accounting for 53.7%. Segregation makes a substantial contribution (31.3%). When compared to the results using CPS occupation, both sorting and segregation effects of occupation are much more important. Appropriate caution here as this is an apples-to-oranges comparison (CPS micro data vs OEWS industry by occupation data) but it does suggest an important role for sorting and segregation of occupations in accounting for the dominant role of between-industry inequality.

We interpret the especially large role of sorting as highlighting the importance of both industry and occupation. This sorting component only arises in the presence of industry effects that are not accounted for by occupation. The between-industry segregation component also highlights the importance of the interaction of industries and occupations via the increased segregation of specific occupations in specific industries.

More research is needed here. Ideally, the OEWS could be integrated with matched employer-employee data such as the LEHD. Or, even better, occupation could become a characteristic in the UI wage records data. In the absence of such ideal data, more can be done to compare and contrast the findings from the OEWS and the matched employer-employee data. In HHS, we find that 30 4-digit industries dominate the increase in between-industry earnings dispersion in both the LEHD and OEWS data. In both datasets, sorting and segregation dominate the rising between-industry contribution. Moreover, the OEWS reveals that it is in these 30 industries where the most dramatic restructur-

²⁰The notation convention for equation (12) is broadly similar to that for equation (10) where for example $\overline{\text{Occupation}_k\beta_2}$ is the industry mean of $\text{Occupation}_{j,k}\beta_2$. In the current context, the employment-weighting plays a critical role. The employment-weighted estimation of equation (11) yields vectors of occupation and industry effects. The employment-weighting in the implementation of (12) is what yields the variation within and across industries in the contribution of occupation effects.

ing of occupations has occurred. For example, 19 of the top contributing industries are high earnings industries with 11 of the 19 high-tech based on STEM intensity. The top 19 industries contribute 65% of the rising between-industry dispersion. Increased sorting of high wage occupations (such as those in Computer and Math occupations) into these high wage industries accounts for more than half of the contribution of these industries. This evidence provides more evidence that understanding rising earnings dispersion lies in understanding the rising between-industry dispersion with the accompanying restructuring of occupations within the industries that dominate the rising dispersion.

8 Sensitivity analysis

Our analysis has mainly focused on the CPS-LEHD linked data. To construct this harmonized and integrated survey and administrative dataset, we linked the national CPS to the LEHD constructed from 18 states.²¹ The linked data permit us to make an apples-to-apples comparison of survey and administrative data for a large sample over an extended period. Still, as we noted above, there are some notable changes when we move from the common-coded CPS for all states to the linked CPS-LEHD sample.

In this Section, we consider the 18 vs 50 state differences for the CPS. In related work (see Haltiwanger, Hyatt, and Spletzer (2022)), we present evidence that key aspects of the inferences from administrative data are robust to using 18 vs 50 states. First, the HHS 18-state total variances and between-firm variances match the Song et al. (2019) 50-state results almost exactly for roughly similar time periods. Second, we compare the percentage of between-firm variances that is between industries in the 18 state LEHD to the Census Bureau’s 18- and 50-state Longitudinal Business Database (LBD). In the 18-state LEHD, 73% of the rising between-firm dispersion is accounted for by rising between-industry dispersion. In the 18-state and 50-state LBD, the analogous statistics are 74% and 73%, respectively.²² In addition, our analysis of the OEWS in the previous Section reflects a national OEWS sample. Rising between-industry dispersion dominates the increase in earnings dispersion in that analysis. Our focus in this Section is thus the sensitivity of the CPS to using 18 vs 50 states.

²¹We do not restrict the CPS to 18 states before linking because the geography in the CPS is place of residence and geography in the LEHD is place of work. There are plenty of individuals who work and live in different states; examples are New York and New Jersey, and the Washington DC metro area comprised of Maryland, Virginia, and the District of Columbia.

²²These LEHD and LBD calculations use the restrictions in HHS (e.g., restricting to firms with 20+ employees). We find very similar results removing those restrictions.

Table 13: Variance decompositions for common-coded CPS, 18 vs. 50 States

	50 states	18 states
<i>Variance level 1996-2002</i>		
Earnings variance	0.703	0.725
Within-industry	86.9%	86.6%
Between-industry	13.1%	13.4%
<i>Variance level 2012-2018</i>		
Earnings variance	0.738	0.762
Within-industry	86.1%	85.3%
Between-industry	13.9%	14.7%
<i>Change from 1996-02 to 2012-18</i>		
Variance growth	0.035	0.036
Within-industry	70.7%	59.6%
Between-industry	29.3%	40.4%

Notes: DC is included in “50 states.”

To investigate this issue, we first return to the common-coded CPS and compute the components of Table 7 for the 18 states that are in the LEHD (that is, the CPS for 18 states without restricting to being linked to LEHD). The first column of Table 13 repeats the results from column 2 of Table 7 and the second column shows the results for the 18 state CPS sample. While patterns are broadly similar, this exercise shows that the between-industry contribution to the change in the variance is higher in the 18 state sample (40.4%) compared to the 50 state sample (29.3%). The implication is that at least for the CPS there are geographic differences in the contribution of between-industry effects using broad sectoral definitions of industry.

We ask why the between-industry variance growth is so different in the 50 versus 18 state data (0.0103 in 50 states, 0.0147 in 18 states). The between-industry variance growth can be written as $\sum_{k=1}^{18} \Delta[(N_k/N)(\bar{w}_k - \bar{w})^2]$, where k indexes NAICS industry sectors. We list the 18 industry contributions to between-industry variance growth in Table 14. Two sectors stand out as accounting for the 18 vs 50 state difference: Retail Trade and Information. The difference in contribution of these two sectors ($0.0047 = 0.0019 + 0.0028$) exceeds the 50 versus 18 state difference in the total contribution ($0.0043 = 0.0148 - 0.0105$).

We take this decomposition one step further and ask whether 50 state versus 18 state differences in employment shares or earnings differentials in the retail trade and information sectors are driving

Table 14: Industry contributions to between-industry variance growth in the CPS, 18 vs 50 states

Industry	50 states	18 states
Agriculture	-0.0008	-0.0015
Mining	0.0016	0.0017
Construction	0.0000	-0.0001
Manufacturing	-0.0021	-0.0014
Wholesale Trade	-0.0005	-0.0007
Retail Trade	0.0035	0.0054
Transport. & Ware.	-0.0007	-0.0007
Utilities	-0.0001	0.0000
Information	0.0054	0.0082
Finance & Insuran	0.0050	0.0051
Real Estat. & Rent.	0.0002	0.0002
Prof. & Bus. Serv.	0.0010	0.0008
Educational Serv.	-0.0005	-0.0003
Healthcare & Soc.	0.0004	0.0006
Arts., Ent., & Rec.	0.0001	0.0003
Accom. & Food Serv.	0.0082	0.0084
Other Services	-0.0005	-0.0006
Unknown (2nd job)	-0.0097	-0.0106
Total	0.0105	0.0148

Notes: Tabulations of the common-coded CPS dataset. DC is included in “50 states.”

the difference in the contributions to between-industry variance growth. We do this by noting that for industry k , $\Delta[(N_k/N)(\bar{w}_k - \bar{w})^2] = \overline{(\bar{w}_k - \bar{w})^2} \Delta(N_k/N) + \overline{(N_k/N)} \Delta(\bar{w}_k - \bar{w})^2$. The first term on the right hand side of this equation is the contribution of changing employment shares, and the second term is the contribution of changing earnings differentials. The calculations are in Appendix Table A2. We find that differences in earnings differentials account for most if not all of the different contributions to between-industry variance growth. In retail trade, a large industry in terms of employment share, earnings differentials are declining more in the 18 states than in the 50 states (-0.2313 to -0.3094 in the 18 states, -0.2406 to -0.2926 in the 50 states). In the information industry, earnings differentials are rising faster in the 18 states than in the 50 states (0.4083 to 0.5789 in the 18 states, 0.3951 to 0.5362 in the 50 states).

A question then is whether these large differences in the contribution of these two sectors is idiosyncratic to the CPS or holds more broadly. To investigate this question, we turn to the QCEW at the state by sectoral level (using the same definitions of sectors as in the CPS). An advantage of the QCEW is that it is from comprehensive administrative data covering all 50 states. It is notable that

Table 15: Comparisons of the Retail Trade and Information sectors in 18 and 50 state datasets

Data	CPS (Micro)		CPS (Agg)		QCEW (Agg)	
	50 states	18 states	50 states	18 States	50 States	18 States
<i>Contribution to variance growth from 1995-2002 to 2012-18:</i>						
Retail Trade	0.0035	0.0054	0.0024	0.0041	0.0066	0.0078
Information	0.0054	0.0082	0.0050	0.0076	0.0030	0.0038
<i>Ratio of 50 state to 18 state:</i>						
Retail Trade	64.8%		59.3%		84.8%	
Information	65.9%		65.8%		78.7%	

Notes: “CPS (Micro)” are tabulations from our common-coded CPS microdata; “CPS (Agg)” uses the same data but first aggregates real earnings and employment to state by 18 sector level before computing variance decompositions; “QCEW (Agg)” aggregates published QCEW earnings and employment to state by 18 sector level before computing variance decompositions. The contribution to variance growth is the change across intervals. The difference between CPS Micro and Agg is due to the Micro starting with log wages at the person level and aggregating while the Agg starts with wages at the state by sector level and then takes logs. The QCEW Agg starts with wages at the state by sector level and then takes logs.

the QCEW public domain data have the same underlying source data as the LEHD data.

Tabulations of between-industry earnings differentials from the public domain QCEW at the state by sectoral level and from the micro CPS are not directly comparable given the CPS differentials reflect employment-weighted means of logs while the QCEW reflects the log of the employment-weighted means. To facilitate an apples-to-apples comparison with the QCEW, we aggregate the levels of the micro common-coded CPS to the state by sectoral level. Results from this exercise are reported in Table 15 focusing on these two key sectors. We refer to the state by sector level data for the CPS and QCEW as “Agg” in this table.

For the CPS, the contribution to between-industry from the micro data vs. the “Agg” for these two sectors is similar. For Retail Trade, the ratio of the of the 50 to 18 state contribution is about 65% for the micro data and 59% for the “Agg” CPS. For Information, the analogous two ratios are 66%. In contrast, the QCEW yields much less of a difference in the between-industry contribution for these two sectors with ratios of 85% for Retail Trade and 79% for Information in comparing the 50 to 18 state contributions. The inference we draw from this exercise is that the CPS idiosyncratically has a low contribution of Retail Trade and Information for the 50 states vs 18 states. We don’t know why the CPS is an outlier relative to the administrative data for these two sectors. The measurement issues with CPS industries discussed above is one possible explanation.

9 Concluding remarks

Research into rising dispersion of earnings has proceeded along two mostly independent paths. Most of the literature uses household survey data. The messages from that line of literature are well-known. There is an important role of rising dispersion across observable person characteristics including age, education and occupation. Age by education effects are relatively more important but occupation plays an important supporting role. Changing industry differentials on the margin (that is after controlling for person characteristics) play little if any role. Finally, and importantly, most of the rise in inequality is within cell – i.e., unexplained.

Longitudinal matched employer-employee data has enabled an alternative look at the determinants of rising earnings inequality. Most of the rise in earnings inequality is accounted for by rising between-firm dispersion. Using an AKM decomposition of earnings into person and firm effects, most of the rising between-firm dispersion is accounted for by increases in the segregation of workers by person effects across firms and sorting of high person effect workers to high firm effect firms. A recent refinement of this message is that between-industry effects dominate the between-firm channels. That is, most of the rising between-firm dispersion is accounted for by between-industry dispersion. Moreover, most of the rising segregation and sorting reflects between-industry segregation and sorting. Also, importantly, the AKM decomposition leaves little of earnings dispersion in levels or changes unexplained.

We have used a novel integrated survey and administrative data to help reconcile these two quite different perspectives. An important part of the reconciliation is methodological. We show that the sorting and segregation interpretation from the recent administrative data literature can be used with the household data when applied to between-industry variation. In combination with using the high quality and detailed industry codes from the administrative data, we find that overall between-industry variation accounts for about 65% of rising dispersion whether using household survey (CPS) earnings or administrative (LEHD) earnings. The decomposition of between-industry dispersion into industry premia, sorting and segregation is sensitive to using CPS vs LEHD earnings as well as sensitive to using observable person characteristics or AKM person effects. Still, using administrative data earnings, the messages are broadly similar using either observable person or AKM person effects. Between-industry sorting accounts for about 30% of rising dispersion using either approach. Industry premia is more important when using observable person characteristics and segregation more important us-

ing AKM person effects. These patterns are not surprising given that AKM person effects capture important variation not captured by observable person characteristics.

One message that emerges from this integrated approach is that interpreting the role of observable person characteristics is enhanced considerably by quantifying the contribution of within-industry vs between-industry effects. This permits quantifying the role of sorting and segregation of observable person characteristics across industries. Such quantification is important empirically. We find that most of the contribution of observable person characteristics including education and occupation reflects sorting and segregation between industries.

An important question is the role of industry vs occupation in accounting for rising earnings dispersion. Using the CPS alone and consistent with the HLL analysis, we find an important but supporting role of occupation effects in accounting for rising earnings dispersion. When we use our linked CPS-LEHD with detailed industry codes, the contribution of occupation effects declines. A concern about this finding might be that the high quality LEHD industry codes are acting as a placeholder for occupation effects. Fully investigating this concern needs more research but in using the OEWS public domain data we make progress. First, we find that most of the increase in earnings dispersion from the industry by occupation data in OEWS is accounted for by rising between-industry dispersion. Moreover, a large share of the rising between-industry dispersion is accounted for by increased sorting of high (low) wage occupations into high (low) wage occupations. These findings suggest industry is not a placeholder for occupation but rather understanding rising dispersion requires understanding this increased between-industry sorting by occupations. We also find an important role for increased segregation of specific occupations in specific industries which also highlights the importance of the interaction of industries and occupations.

References

- Abowd, John M., Francis Kramarz, and David N. Margolis. 1999. "High Wage Workers and High Wage Firms." *Econometrica*, Vol. 67, No. 2, pp, 251-333.
- Abraham, Katharine G., John Haltiwanger, Kristin Sandusky, and James R. Spletzer. 2013. "Exploring Differences in Household vs. Establishment Measures of Employment." *Journal of Labor Economics*, Vol. 31, No. 2, Pt. 2, April 2013, pp. S129-S172.

- Acemoglu, Daron and David H. Autor. 2011. “Skills, Tasks and Technologies: Implications for Employment and Earnings.” In Orley Ashenfelter and David Card, eds., *Handbook of Labor Economics*, Volume 4, Amsterdam: Elsevier-North Holland, pp. 1043-1171
- Autor David, David Dorn, Lawrence F. Katz, Christina C. Patterson, and John Van Reenen. 2020. “The Fall of the Labor Share and the Rise of Superstar Firms.” *Quarterly Journal of Economics* 135(2): 645-709.
- Bollinger, Christopher R., Barry T. Hirsch, Charles M. Hokayem, and James P. Ziliak. 2019. “Trouble in the Tails? What We Know about Earnings Nonresponse 30 Years after Lillard, Smith, and Welch.” *Journal of Political Economy*, Vol. 127, No. 5, pp. 2143-2185.
- Card, David, Jorg Heining, and Patrick Kline. 2013. “Workplace Heterogeneity and the Rise of West German Wage Inequality.” *Quarterly Journal of Economics*, Vol. 128, No. 3, pp. 967-1015.
- Dey, Matthew, Susan Houseman, and Anne Polivka. 2010. “What Do We Know About Contracting Out in the United States? Evidence from Household and Establishment Surveys” in *Labor in the New Economy*, Katharine G. Abraham, James R. Spletzer, and Michael Harper, eds., Chicago: University of Chicago Press, pp. 267-304.
- Flood, Sarah, Miriam King, Renae Rodgers, Steven Ruggles, J. Robert Warren, and Michael Westberry. Integrated Public Use Microdata Series, Current Population Survey: Version 9.0 [dataset]. Minneapolis, MN: IPUMS, 2021. <https://doi.org/10.18128/D030.V9.0>
- Haltiwanger, John and James Spletzer. 2020. “Between Firm Changes in Earnings Inequality: The Dominant Role of Industry Effects.” NBER Working Paper No. 26786, February.
- Haltiwanger, John, Henry R. Hyatt, and James R. Spletzer. 2022. “Industries, Mega Firms, and Increasing Inequality.” Unpublished draft, University of Maryland.
- Herkenhoff, Kyle, Jeremy Lise, Guido Menzio, and Gordon Phillips. 2018. “Production and Learning in Teams.” NBER Working Paper No. 25179, October.
- Hoffman, Florian, David S. Lee, and Thomas Lemieux. 2020. “Growing Income Inequality in the United States and Other Advanced Economies.” *Journal of Economic Perspectives*, Vol. 34, No. 4, pp. 52-78.
- Jarosch, Gregor, Ezra Oberfield, and Esteban Rossi-Hansberg. 2019. “Learning from Coworkers.” NBER Working Paper No. 25418, January.

Mellow, Wesley, and Hal Sider. 1983. "Accuracy of response in labor market surveys: Evidence and implications." *Journal of Labor Economics* 1, no. 4:331-344.

Pollard, Emily. 2019. "New Approach to Industry and Occupation Recoding in the CPS." Federal Reserve Bank of Kansas City Technical Briefing No. 19-02, June.

Song, Jae, David J. Price, Fatih Guvenen, Nicholas Bloom, and Till von Wachter. 2019. "Firming Up Inequality." *Quarterly Journal of Economics*, Vol. 134, No. 1, pp. 1-50.

Stansbury, Anna, and Lawrence H. Summers. 2020. "The Declining Worker Power Hypothesis: An explanation for the recent evolution of the American economy." *Brookings Papers on Economic Activity*, Spring, pp. 1-77.

Appendices

A Literature review: mathematical details

This Appendix provides formal details on recent empirical studies of earnings inequality that use matched employer-employee data. Much of the following is discussed in greater detail in Section 4 of HHS.

A.1 Card, Heining, and Kline (2013)

Card, Heining, and Kline (2013) estimate the earnings model of Abowd, Kramarz, and Margolis (1999). They estimate this by separate seven-year intervals. The Card, Heining, and Kline (2013) earnings specification can be expressed as

$$y_{i,j,t} = X_{i,t}\beta + \theta_i + \psi_j + \varepsilon_{i,j,t}. \quad (\text{A1})$$

In other words, Card, Heining, and Kline (2013) assume that earnings $y_{i,j,t}$ are the sum of an effect θ_i of worker i in interval p , a firm effect ψ_j when employed by employer j , and a vector of time-varying observable characteristics $X_{i,t}$ for worker i at time t , which have distinct marginal effects β .

Following Card, Heining, and Kline (2013), the variance of labor earnings can be decomposed into the following components:

$$\begin{aligned} \text{var}(y_{i,j,t}) = & \underbrace{\text{var}(X_{i,t}\beta) + \text{var}(\theta_i) + 2\text{cov}(X_{i,t}\beta, \theta_i)}_{\text{person effects and observables}} + \underbrace{\text{var}(\psi_j)}_{\text{total pay}} + \\ & \underbrace{2\text{cov}(\theta_i, \psi_j) + 2\text{cov}(X_{i,t}\beta, \psi_j)}_{\text{total sorting}} + \underbrace{\text{var}(\varepsilon_{i,j,t})}_{\text{residual}}. \end{aligned} \quad (\text{A2})$$

Earnings inequality is a function of worker heterogeneity, firm heterogeneity, and the relationship between the two (sorting). Worker heterogeneity contributes to inequality through dispersion in the person effects $\text{var}(\theta_i)$, dispersion in the effects of observable characteristics $\text{var}(X_{i,t}\beta)$, and the covariance between the two $2\text{cov}(X_{i,t}\beta, \theta_i)$. Firm heterogeneity contributes to inequality through dispersion

in firm pay premia $\text{var}(\psi_j)$. Residual dispersion in earnings that is not attributed to worker or firm heterogeneity is $\text{var}(\varepsilon_{i,j,t})$.

The relationship between worker heterogeneity and firm heterogeneity also contributes to inequality. The covariance between worker-driven pay differentials and firm-specific pay premia is called “sorting.” Sorting can enhance or mitigate total inequality. For example, if low-earning workers tend to work for high-paying firms, then sorting will lead to lower inequality. In contrast, if low-earnings workers tend to work for low-paying firms, then sorting will lead to higher inequality.

A.2 Song et al. (2019)

Song et al. (2019) rely on the same earnings specification as Card, Heining, and Kline (2013), equation (A1). They extend the Card, Heining, and Kline (2013) decomposition of the variance of labor earnings as expressed in equation (A2). Specifically, Song et al. (2019) distinguish worker heterogeneity that occurs within vs. between firms. The tendency for similar workers to be employed among each other is what they call “segregation.”

Following Song et al. (2019), the variance of earnings can be written as:

$$\begin{aligned}
 \text{var}(y_{i,j,t}) = & \underbrace{\text{var}(\theta_i - \overline{\theta}_{j,k}) + \text{var}(X_{i,t}\beta - \overline{X}_j\beta) + 2\text{cov}(\theta_i - \overline{\theta}_j, X_{i,t}\beta - \overline{X}_j\beta)}_{\text{person effects and observables (within-firm)}} + \\
 & \underbrace{\text{var}(\overline{\theta}_j) + \text{var}(\overline{X}_j\beta) + 2\text{cov}(\overline{\theta}_j, \overline{X}_j\beta)}_{\text{segregation (between-firm)}} + \underbrace{\text{var}(\psi_j)}_{\text{pay premia (between-firm)}} + \\
 & \underbrace{2\text{cov}(\overline{\theta}_j, \psi_j) + 2\text{cov}(\overline{X}_j\beta, \psi_j)}_{\text{sorting (between-firm)}} + \underbrace{\text{var}(\varepsilon_{i,j,t})}_{\text{residual (within-firm)}}.
 \end{aligned} \tag{A3}$$

The Song et al. (2019) extension of the standard AKM variance as decomposition is useful for analyzing within- vs. between-firm earnings dispersion.

Between-firm dispersion is the sum of the contributions of sorting, segregation, and firm premia. The firm premia term $\text{var}(\psi_j)$ is the standard expression used by Card, Heining, and Kline (2013) and many others.

Another component of between-firm dispersion is sorting: the covariance between worker and firm effects. Sorting is $2\text{cov}(\overline{\theta}_j, \psi_j) + 2\text{cov}(\overline{X}_j\beta, \psi_j)$. Sorting reflects the extent to which low- vs.

high-earnings workers work for low- vs. high-paying firms. Segregation reflects the concentration within firms of workers of the same type (captured by person effects). Formally, it is expressed as $\text{var}(\overline{\theta_{j,k}}) + \text{var}(\overline{X_{j,k}\beta}) + 2\text{cov}(\overline{\theta_{j,k}}, \overline{X_{j,k}\beta})$.

The remaining dispersion is within-firm dispersion. Worker-level effects are given by $\text{var}(\theta_i - \overline{\theta_{j,k}}) + \text{var}(X_{i,t}\beta - \overline{X_{j,k}\beta}) + 2\text{cov}(\theta_i - \overline{\theta_{j,k}}, X_{i,t}\beta - \overline{X_{j,k}\beta})$. The residual dispersion $\text{var}(\varepsilon_{i,j,k,t})$ also occurs within firms.

A.3 Haltiwanger, Hyatt, and Spletzer (2022)

Haltiwanger, Hyatt, and Spletzer (2022) consider the role of industries indexed by k in the evolution of inequality. They therefore introduce the subscript k into the baseline AKM equation (A1). This yields:

$$y_{i,j,k,t} = X_{i,t}\beta + \theta_i + \psi_{j,k} + \varepsilon_{i,j,k,t}. \quad (\text{A4})$$

HHS propose a tractable framework for the study of inequality in terms of effects that occur within- and between-industries. To explore cross-industry differences, HHS calculate industry-level averages. They define the average worker effect in industry k as $\overline{\theta_k}$, the average effect of observable characteristics as $\overline{X_k\beta}$, and the average firm effect as $\overline{\psi_k}$.

Given this notation, it is possible to measure how firm-level pay premia relate to within- vs. between-industry earnings dispersion. The HHS industry-enhanced variance decomposition is:

$$\begin{aligned} \text{var}(y_{i,j,k,t}) = & \underbrace{\text{var}(\theta_i - \overline{\theta_{j,k}}) + \text{var}(X_{i,t}\beta - \overline{X_{j,k}\beta}) + 2\text{cov}(\theta_i - \overline{\theta_{j,k}}, X_{i,t}\beta - \overline{X_{j,k}\beta})}_{\text{within-firm person effect and observables}} + \\ & \underbrace{\text{var}(\overline{\psi_k})}_{\text{between-industry pay premia}} + \underbrace{\text{var}(\psi_{j,k} - \overline{\psi_k})}_{\text{within-industry, between-firm pay premia}} + \underbrace{2\text{cov}(\overline{\theta_k}, \overline{\psi_k}) + 2\text{cov}(\overline{\psi_k}, \overline{X_k\beta})}_{\text{between-industry sorting}} + \\ & \underbrace{2\text{cov}[(\overline{\theta_{j,k}} - \overline{\theta_k}), (\psi_{j,k} - \overline{\psi_k})] + 2\text{cov}[(\psi_{j,k} - \overline{\psi_k}), (\overline{X_{j,k}\beta} - \overline{X_k\beta})]}_{\text{within-industry, between-firm sorting}} + \\ & \underbrace{\text{var}(\overline{\theta_{j,k}} - \overline{\theta_k}) + \text{var}(\overline{X_{j,k}\beta} - \overline{X_k\beta}) + 2\text{cov}[(\overline{\theta_{j,k}} - \overline{\theta_k}), (\overline{X_{j,k}\beta} - \overline{X_k\beta})]}_{\text{within-industry, between-firm segregation}} + \\ & \underbrace{\text{var}(\overline{\theta_k}) + \text{var}(\overline{X_k\beta}) + 2\text{cov}(\overline{\theta_k}, \overline{X_k\beta})}_{\text{between-industry segregation}} + \underbrace{\text{var}(\varepsilon_{i,j,k,t})}_{\text{residual (within-firm)}}. \end{aligned} \quad (\text{A5})$$

The within-firm dispersion in HHS is exactly as in Song et al. (2019). The differences are in the between-firm components. $\text{var}(\psi_{j,k}) = \text{var}(\bar{\psi}_k) + \text{var}(\psi_{j,k} - \bar{\psi}_k)$, where $\bar{\psi}_k$ is the between-industry dispersion in average firm effects, i.e. industry-level pay premia. The remaining term $\text{var}(\psi_{j,k} - \bar{\psi}_k)$ captures the within-industry dispersion of firm-level pay premia.

HHS also distinguish between the within- vs. between-industry components of sorting and segregation. Between-industry sorting reflects the extent to which highly-paid workers are employed in industries with high pay premia. Formally, it is $2\text{cov}(\bar{\theta}_k, \bar{\psi}_k) + 2\text{cov}(\bar{\psi}_k, \bar{X}_k\beta)$. The previous is distinct from within-industry sorting $2\text{cov}[(\bar{\theta}_{j,k} - \bar{\theta}_k), (\theta_{j,k} - \bar{\theta}_k)] + 2\text{cov}[(\theta_{j,k} - \bar{\theta}_k), (\bar{X}_{j,k}\beta - \bar{X}_k\beta)]$. This is the component of sorting where relatively highly-paid workers tend to work at high-paying firms, apart from industry-level differences.

Segregation also can be decomposed into its within- vs. between-industry components. Between-industry segregation is given by industry-level average worker effects. Formally, this is expressed as $\text{var}(\bar{\theta}_k) + \text{var}(\bar{X}_k\beta) + 2\text{cov}(\bar{\theta}_k, \bar{X}_k\beta)$. This is the extent to which low- vs. highly-paid workers tend to work with each other. Segregation that occurs within industries is $\text{var}(\bar{\theta}_{j,k} - \bar{\theta}_k) + \text{var}(\bar{X}_{j,k}\beta - \bar{X}_k\beta) + 2\text{cov}[(\bar{\theta}_{j,k} - \bar{\theta}_k), (\bar{X}_{j,k}\beta - \bar{X}_k\beta)]$.

B Supplementary tables and figures

Figure A1: Creating the common-coded CPS-ASEC

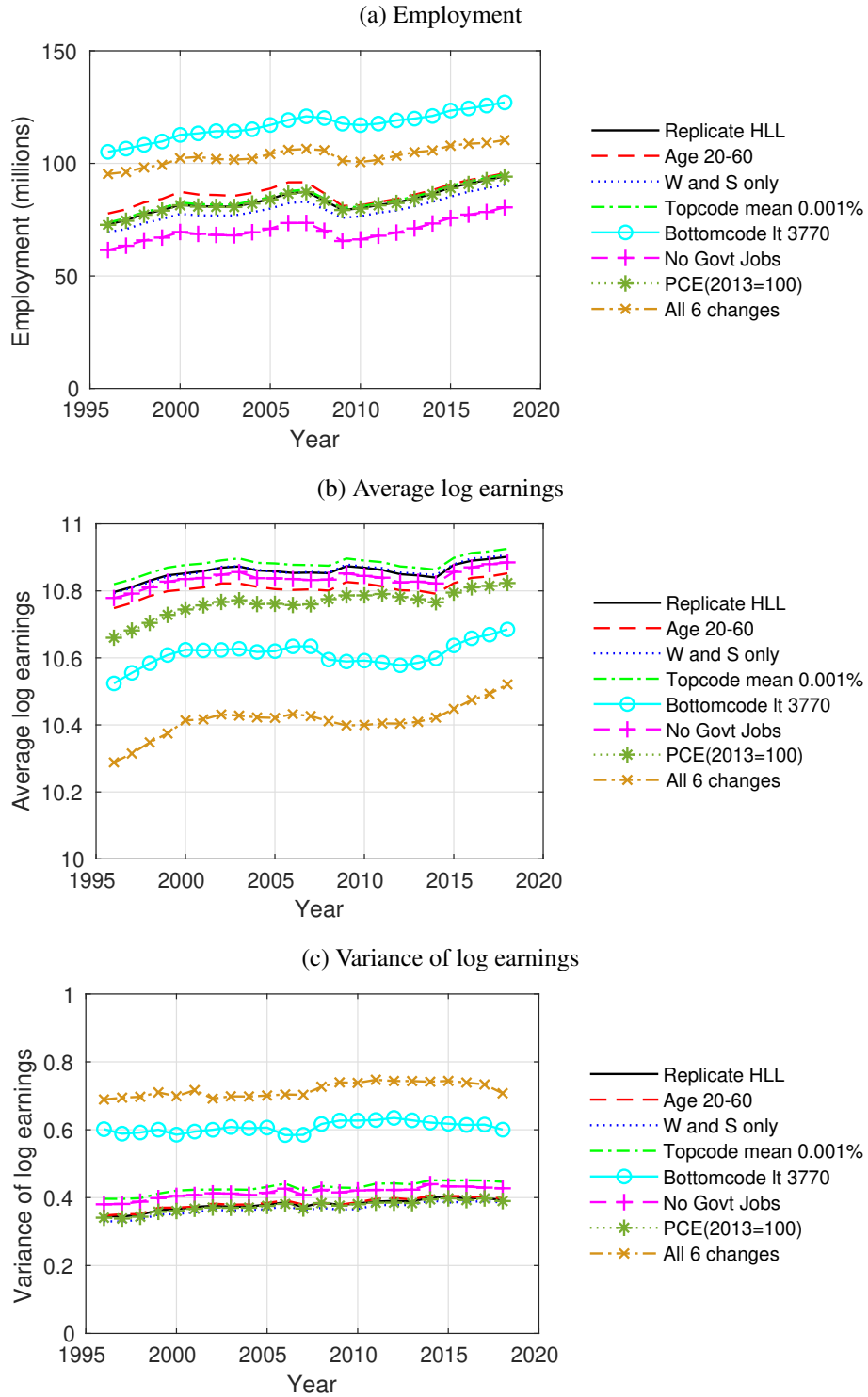
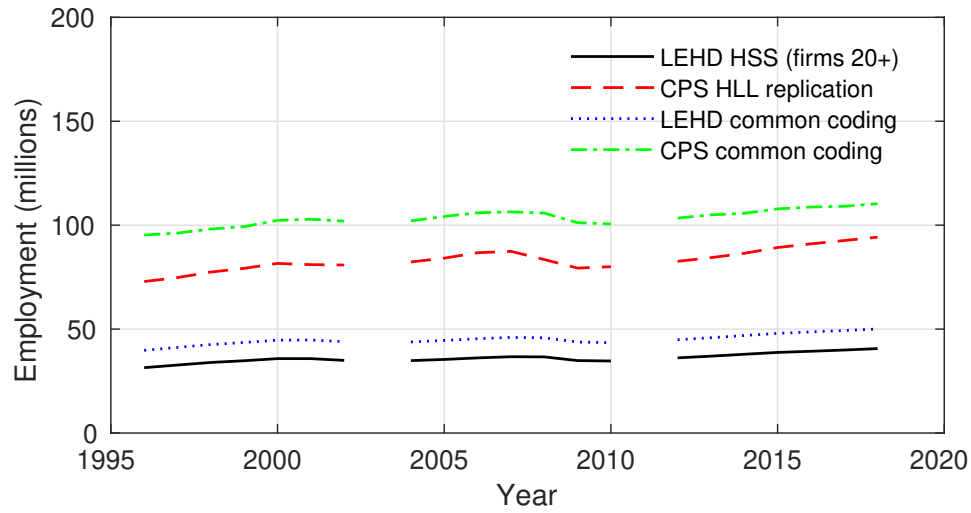
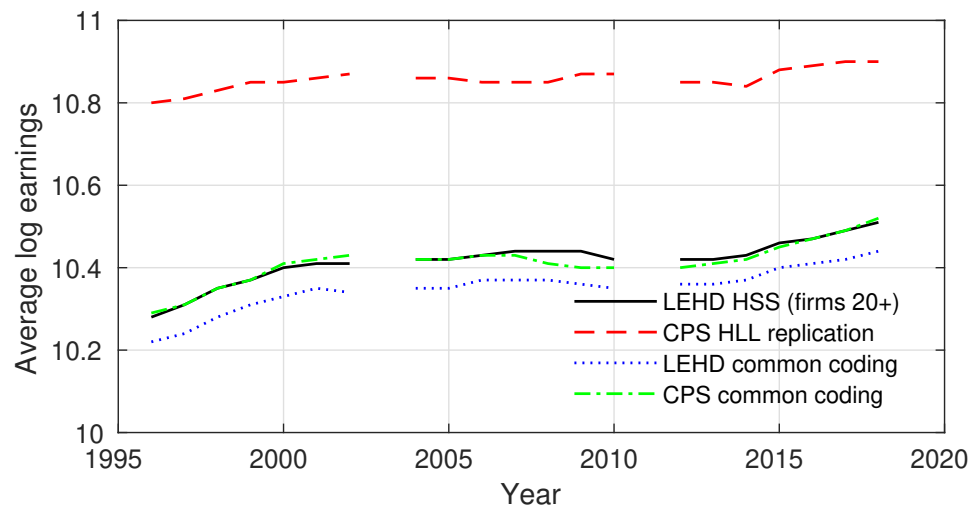


Figure A2: Mean, variance, and employment of HLL CPS-ASEC, HHS LEHD, common-coded CPS-ASEC, and common-coded LEHD earnings, by year

(a) Employment



(b) Average log earnings



(c) Variance of log earnings

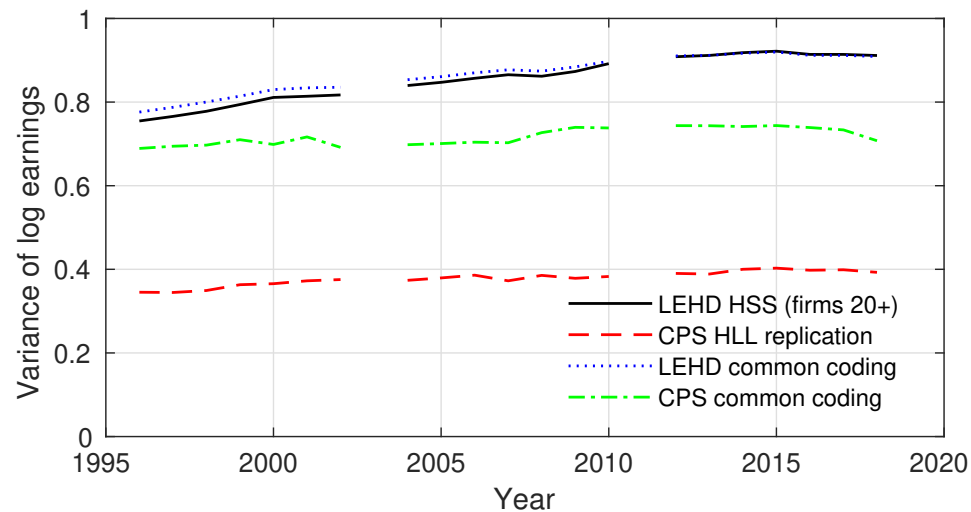


Figure A3: Linking common-coded CPS-ASEC and common-coded LEHD data

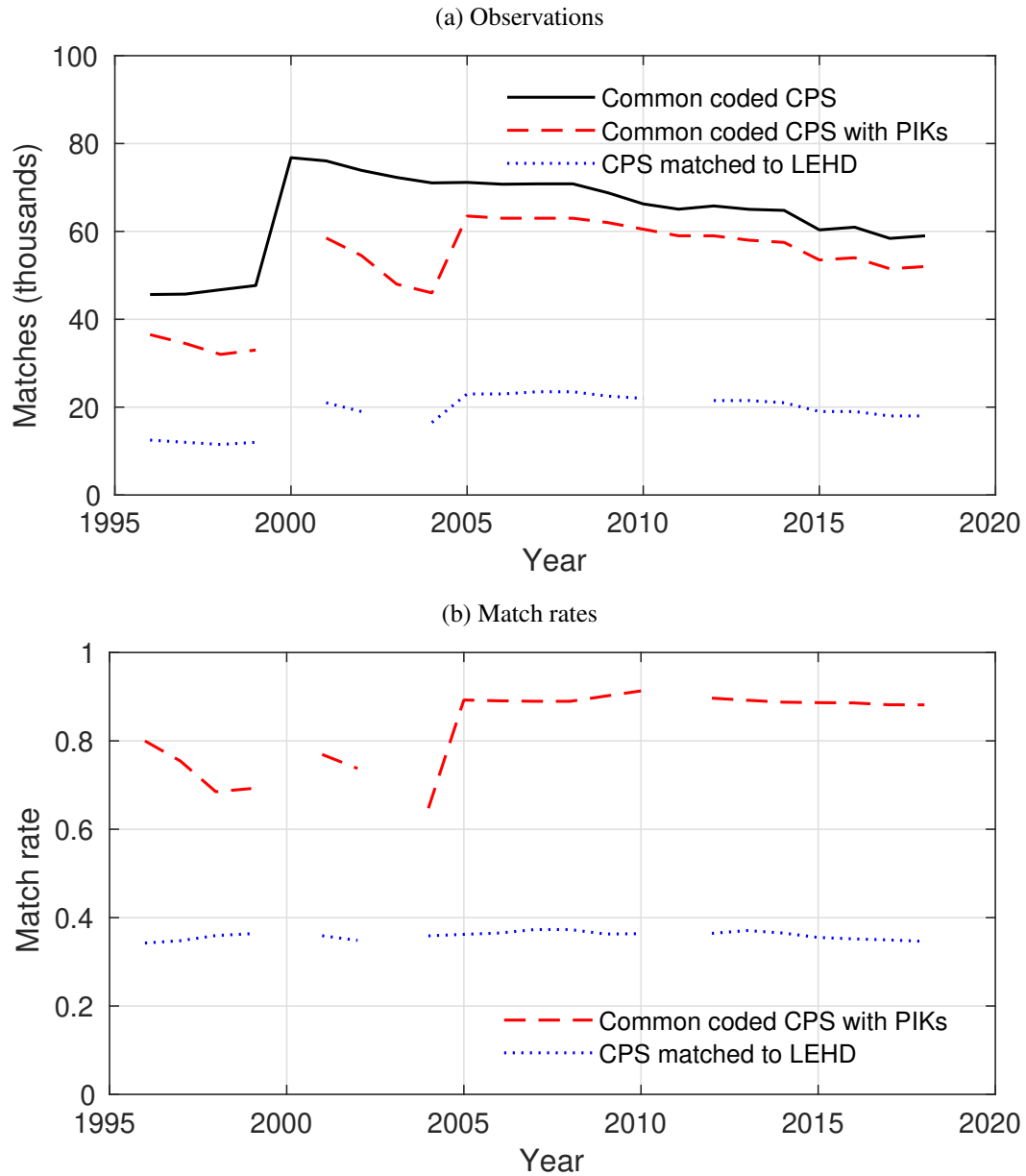
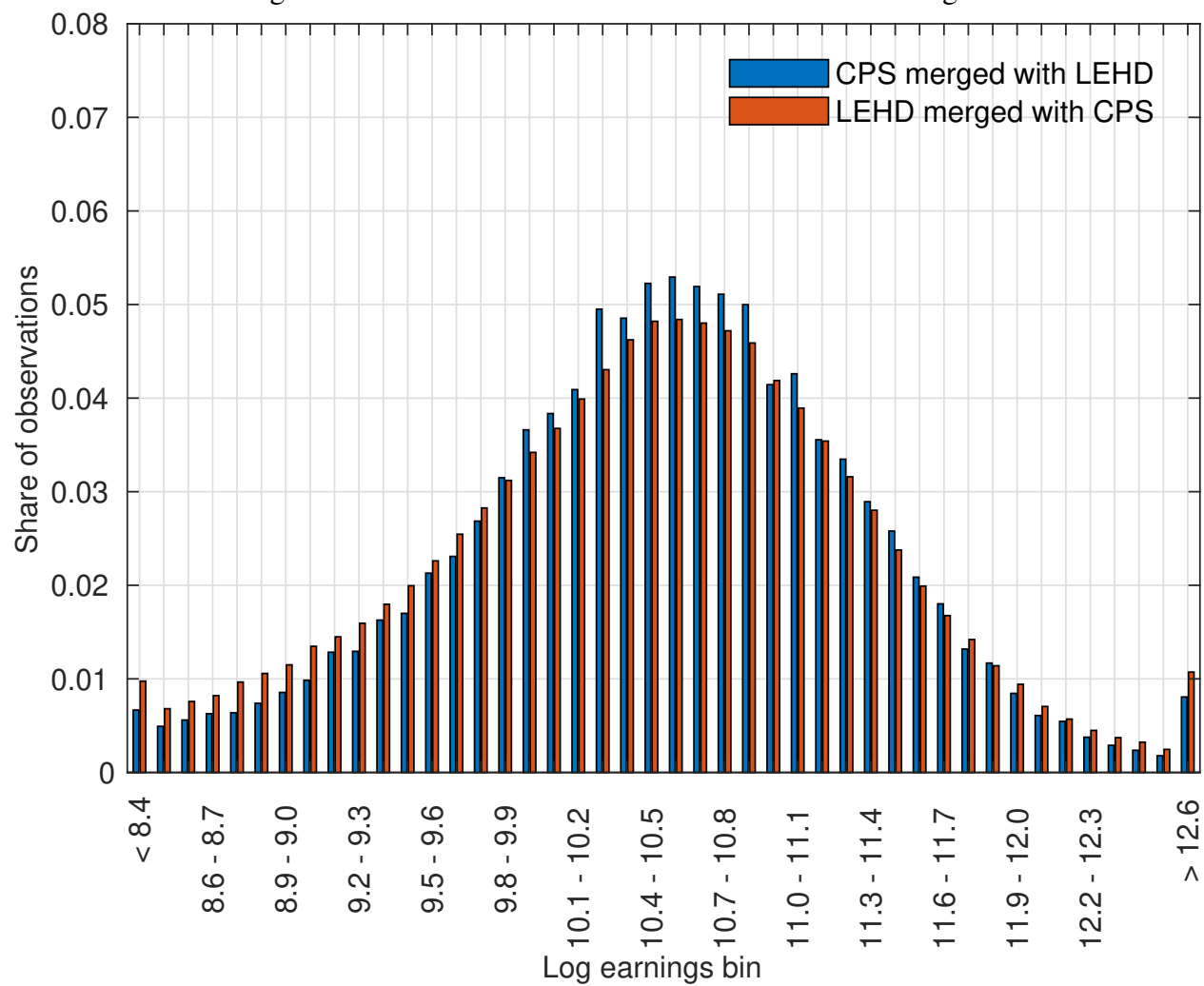


Figure A4: PDFs of linked CPS-ASEC and LEHD earnings



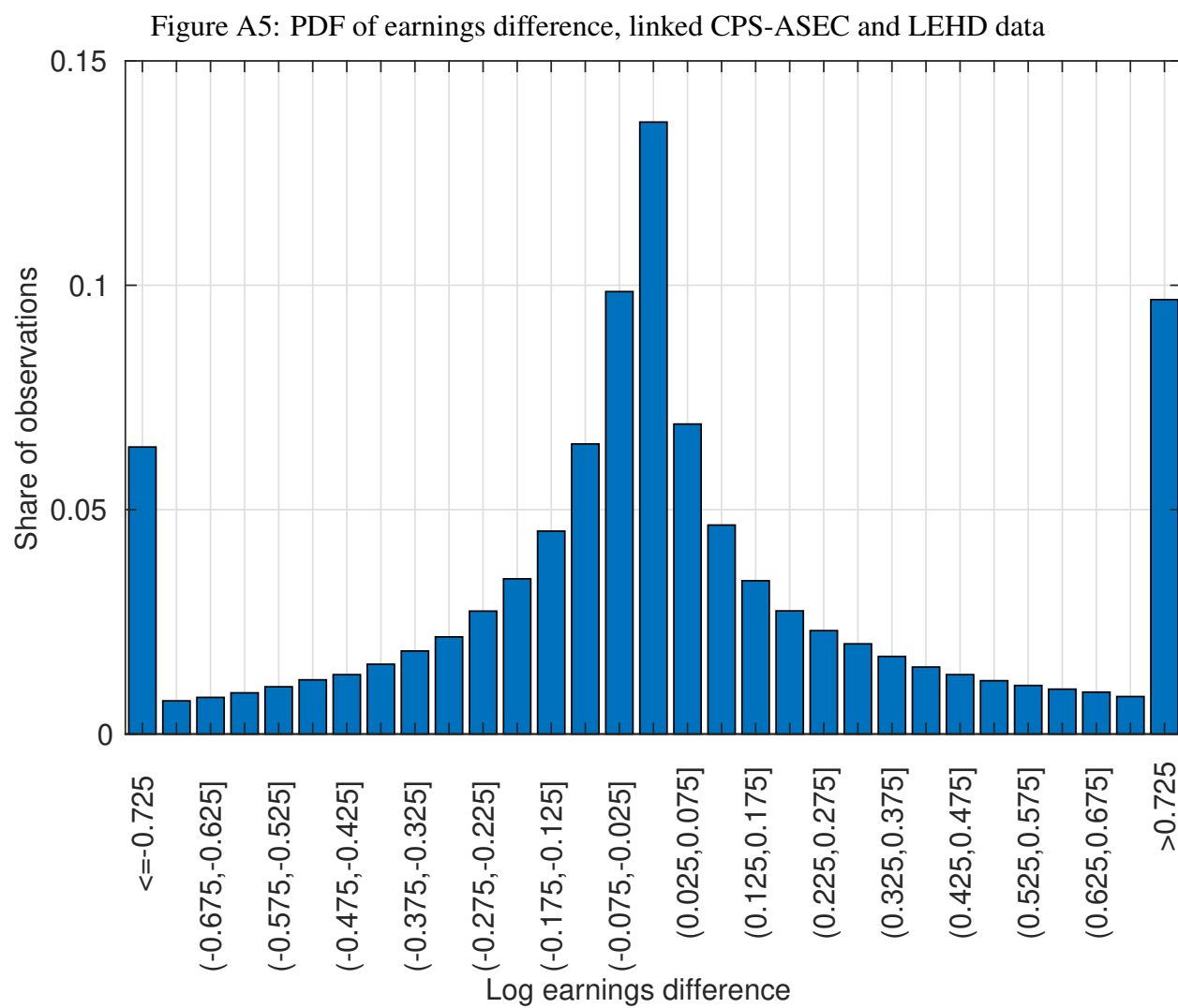


Figure A6: Trouble in the tails in CPS earnings distributions
CPS Earnings by LEHD Earnings

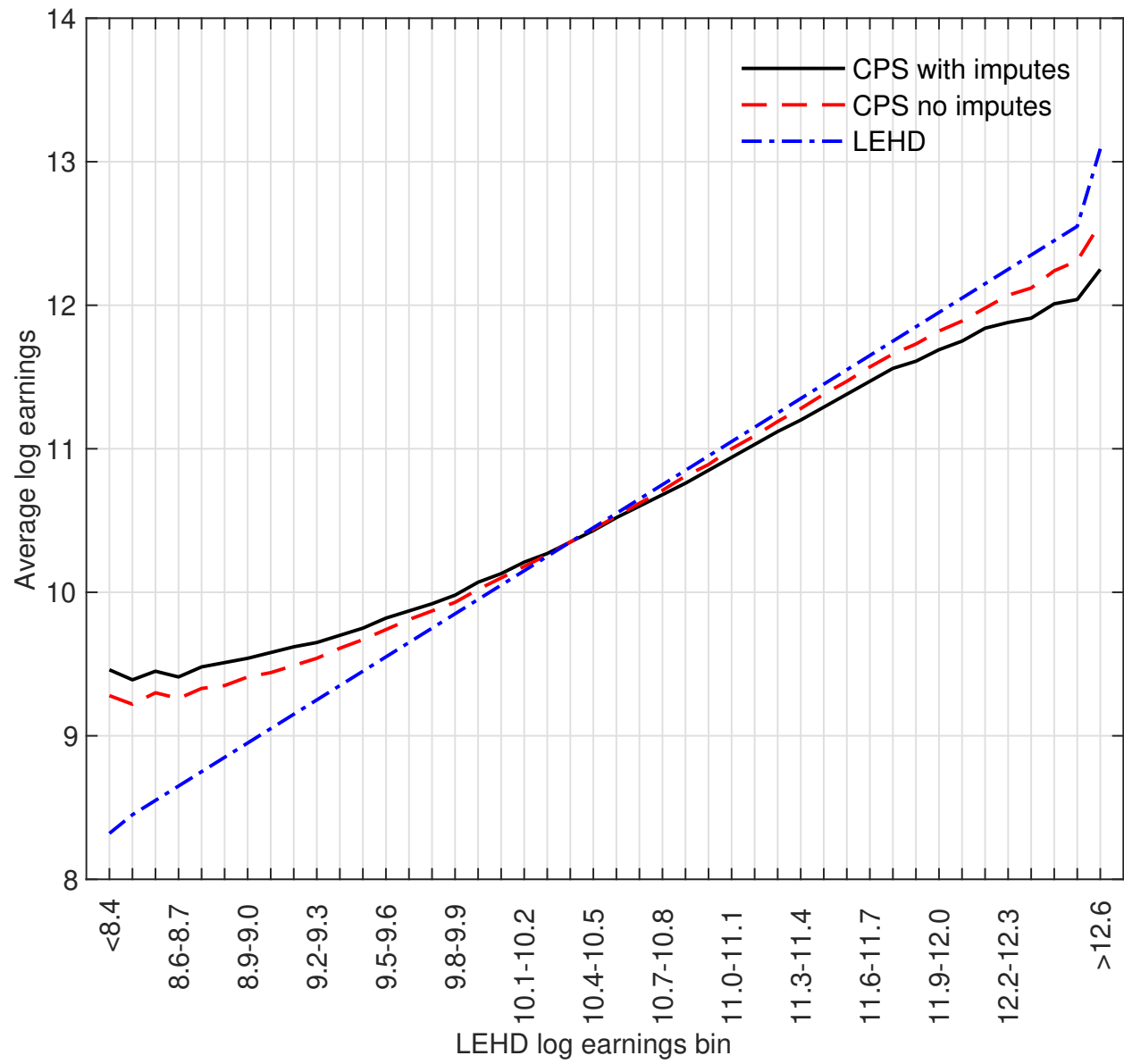


Table A1: First and second panels replicate HLL Figure 4, third panel is HLL with pooled genders, Fourth panel is pooled genders with labor earnings rather than total income (Table 1 of this paper)

	1975- 1979	1980- 1984	1985- 1989	1990- 1994	1995- 1999	2000- 2004	2005- 2009	2010- 2014	2015- 2018	Growth 1975-79 to 2015-18
HLL Figure 4, Males										
Total income variance	0.262	0.286	0.329	0.358	0.389	0.416	0.427	0.444	0.457	0.195
Age*Educ	0.052	0.061	0.076	0.091	0.102	0.112	0.119	0.124	0.124	0.072
Occupation	0.009	0.010	0.013	0.016	0.021	0.023	0.025	0.026	0.028	0.019
Industry	0.009	0.010	0.011	0.011	0.010	0.009	0.008	0.008	0.008	-0.001
Residual	0.193	0.206	0.229	0.240	0.256	0.272	0.274	0.286	0.297	0.105
HLL Figure 4, Females										
Total income variance	0.190	0.208	0.250	0.273	0.301	0.311	0.333	0.351	0.374	0.185
Age*Educ	0.038	0.041	0.054	0.066	0.077	0.081	0.089	0.096	0.102	0.065
Occupation	0.012	0.013	0.017	0.019	0.019	0.020	0.023	0.023	0.025	0.013
Industry	0.007	0.008	0.010	0.010	0.009	0.007	0.006	0.006	0.006	-0.001
Residual	0.133	0.147	0.170	0.179	0.195	0.204	0.215	0.226	0.241	0.108
HLL Figure 4, Pooled										
Total income variance	0.298	0.305	0.337	0.352	0.380	0.396	0.407	0.421	0.436	0.138
Age*Educ	0.050	0.057	0.069	0.081	0.091	0.100	0.102	0.105	0.106	0.056
Occupation	0.025	0.022	0.023	0.022	0.024	0.025	0.028	0.028	0.029	0.005
Industry (SIC 12)	0.016	0.016	0.016	0.015	0.014	0.012	0.011	0.011	0.011	-0.005
Residual	0.207	0.211	0.230	0.235	0.250	0.262	0.266	0.277	0.289	0.083
Table 1 this paper, Pooled										
Labor earnings variance	0.283	0.292	0.318	0.332	0.349	0.372	0.380	0.390	0.398	0.115
Age*Educ	0.045	0.049	0.060	0.071	0.079	0.088	0.092	0.094	0.093	0.048
Occupation	0.023	0.022	0.023	0.021	0.023	0.024	0.026	0.026	0.027	0.004
Industry (SIC 12)	0.017	0.017	0.016	0.015	0.014	0.011	0.011	0.011	0.011	-0.006
Residual	0.198	0.205	0.220	0.225	0.234	0.249	0.251	0.259	0.267	0.069

Notes: The top two panels replicate columns {B, E, H, P, W, X} of HLL's figure_4.xlsx on the *Journal of Economic Perspectives* website.

Table A2: Industry contributions to between-industry growth, common-coded CPS, 50 states and 18 states

Industry	CPS 50 states + DC	CPS 18 states	Difference 18 minus 50 States	Changing employment shares	Changing earnings differentials
Agriculture	-0.0008	-0.0015	-0.0007	-0.0003	-0.0005
Mining	0.0015	0.0017	0.0001	0.0004	-0.0003
Construction	0.0000	-0.0001	-0.0001	0.0000	-0.0001
Manufacturing	-0.0021	-0.0013	0.0008	-0.0002	0.0010
Wholesale Trade	-0.0005	-0.0007	-0.0002	0.0000	-0.0002
Retail Trade	0.0035	0.0054	0.0019	0.0002	0.0017
Transport & Warehous	-0.0007	-0.0007	0.0001	0.0000	0.0001
Utilities	-0.0001	-0.0001	0.0000	0.0001	0.0000
Information	0.0054	0.0082	0.0028	-0.0001	0.0029
Finance & Insurance	0.0050	0.0051	0.0001	-0.0002	0.0003
Real Estate & Rental	0.0002	0.0002	0.0000	0.0000	0.0000
Prof & Bus Services	0.0010	0.0008	-0.0002	-0.0001	-0.0002
Educational Services	-0.0005	-0.0003	0.0003	0.0001	0.0002
Healthcare & Soc Ass	0.0004	0.0006	0.0002	0.0000	0.0002
Arts, Ent, & Rec	0.0001	0.0003	0.0002	0.0001	0.0001
Accom & Food Serv	0.0082	0.0084	0.0002	0.0002	0.0000
Other Services	-0.0005	-0.0006	-0.0001	0.0000	0.0000
Unknown (2nd job)	-0.0097	-0.0106	-0.0009	-0.0010	0.0001

Notes: See text of Section 8 for the methodology used to create these statistics. Rows are in bold when columns 1 and 2 differ by more than .001.

Table A3: Agreement Rate of Industry Sector in CPS-LEHD Linked Data

CPS NAICS	CPS NAICS industry distribution	% LEHD with same industry
Agriculture	1.0%	58.8%
Mining	0.9%	51.5%
Construction	6.9%	70.2%
Manufacturing	15.7%	66.7%
Wholesale Trade	4.1%	46.9%
Retail Trade	13.3%	71.3%
Transportation & Warehousing	4.2%	64.4%
Utilities	0.9%	53.6%
Information	6.1%	46.6%
Finance & Insurance	6.5%	77.0%
Real Estate & Rental	1.9%	50.9%
Professional &+ Business Services	10.3%	67.1%
Educational Services	2.8%	44.2%
HealthCare & Social Assistance	12.8%	83.4%
Arts, Entertainment, & Recreation	1.5%	51.5%
Accommodation & Food Services	6.7%	77.9%
Other Services	3.2%	48.0%
Unknown (2nd job)	1.2%	0.0%
Total	100%	66.1%

*Notes: Italics shows agreement >75%. **Bold** shows agreement <50%.*

Table A4: Variance decomposition of the human capital earnings equation

	(1)	(2)	(3)	(4)	(5)	(6)
Data	CPS	CPS	Linked CPS-LEHD	Linked CPS-LEHD	Linked CPS-LEHD	Linked CPS-LEHD
Sample	HLL JEP	Common coded	Common coded	Common coded	Common coded	Common coded
Earnings measure	CPS	CPS	CPS	CPS	CPS	LEHD
Industry measure	CPS 18	CPS 18	CPS 18	LEHD 18	LEHD 299	LEHD 299
<i>Variance level 1996-2002</i>						
Earnings variance	0.360	0.703	0.667	0.667	0.667	0.746
Within-industry:						
Age, education & occupation	28.5%	24.4%	27.7%	27.9%	22.2%	18.7%
Age and education	13.0%	11.8%	13.7%	13.9%	11.0%	10.2%
Occupation	7.2%	6.4%	6.7%	6.8%	5.8%	4.3%
Covariance: age+educ. & occ.	8.2%	6.2%	7.3%	7.2%	5.4%	4.2%
Residual	65.6%	62.5%	60.0%	63.8%	60.3%	59.6%
Between-industry:	5.9%	13.1%	12.4%	8.3%	17.5%	21.7%
Segregation:	3.3%	2.2%	2.2%	2.0%	4.1%	3.1%
Age and education	1.8%	0.9%	1.0%	1.0%	1.8%	1.4%
Occupation	0.5%	0.4%	0.4%	0.3%	0.8%	0.5%
Covariance: age+educ. & occ.	1.1%	0.8%	0.8%	0.7%	1.6%	1.1%
Pay Premia	6.0%	11.1%	8.7%	4.3%	8.2%	12.2%
Sorting:	-3.4%	-0.1%	1.5%	2.0%	5.2%	6.4%
Covariance: age+educ. & ind.	-2.2%	-0.2%	0.9%	1.0%	3.2%	4.4%
Covariance: industry & occ.	-1.2%	0.1%	0.6%	0.9%	2.0%	2.0%

Notes: The rows titled “Data” and “Sample” indicate the data used for the variance decomposition (see text for description). The row titled “Earnings measure” indicates whether CPS or LEHD earnings is used in the decomposition. In the row titled “Industry measure,” “CPS 18” refers to 18 NAICS sectors from the CPS-ASEC (recoding CPS-ASEC variable indly following Table C-5 of Pollard (2019)), “LEHD 18” refers to NAICS sectors from the LEHD, and “LEHD 299” refers to 299 4-digit NAICS industries from the LEHD. See equation (10) for definitions.

Table A4: Variance decomposition of the human capital earnings equation (continued)

	(1)	(2)	(3)	(4)	(5)	(6)
Data	CPS	CPS	Linked CPS-LEHD	Linked CPS-LEHD	Linked CPS-LEHD	Linked CPS-LEHD
Sample	HLL JEP	Common coded	Common coded	Common coded	Common coded	Common coded
Earnings measure	CPS	CPS	CPS	CPS	CPS	LEHD
Industry measure	CPS 18	CPS 18	CPS 18	LEHD 18	LEHD 299	LEHD 299
<i>Variance level 2012-2018</i>						
Earnings variance	0.397	0.738	0.717	0.717	0.717	0.845
Within-industry:						
Age, education, & occupation:	27.5%	24.5%	26.8%	27.5%	21.1%	18.1%
Age and education	12.9%	12.2%	13.6%	13.8%	10.9%	10.7%
Occupation	6.9%	6.1%	6.3%	6.7%	5.4%	3.8%
Covariance: age+educ. & occ.	7.7%	6.2%	6.8%	6.9%	4.8%	3.6%
Residual	65.0%	61.6%	58.5%	61.2%	58.0%	55.0%
Between-industry:	7.5%	13.9%	14.7%	11.4%	20.9%	26.9%
Segregation:	4.4%	3.7%	4.2%	3.9%	6.1%	4.5%
Age and education	2.0%	1.3%	1.5%	1.5%	2.3%	1.9%
Occupation	0.7%	0.7%	0.8%	0.6%	1.1%	0.7%
Covariance: age+educ. & occ.	1.8%	1.6%	1.9%	1.7%	2.7%	1.8%
Pay premia	5.5%	8.4%	7.0%	3.9%	7.5%	13.4%
Sorting:	-2.4%	1.8%	3.5%	3.6%	7.3%	9.1%
Covariance: age+educ. & ind.	-1.8%	0.8%	2.0%	1.9%	4.4%	6.1%
Covariance: industry & occ.	-0.6%	1.0%	1.5%	1.7%	2.9%	3.0%

Notes: The rows titled “Data” and “Sample” indicate the data used for the variance decomposition (see text for description). The row titled “Earnings measure” indicates whether CPS or LEHD earnings is used in the decomposition. In the row titled “Industry measure,” “CPS 18” refers to 18 NAICS sectors from the CPS-ASEC (recoding CPS-ASEC variable indly following Table C-5 of Pollard (2019)), “LEHD 18” refers to NAICS sectors from the LEHD, and “LEHD 299” refers to 299 4-digit NAICS industries from the LEHD. See equation (10) for definitions.

Table A4: Variance decomposition of the human capital earnings equation (continued)

	(1)	(2)	(3)	(4)	(5)	(6)
Data	CPS	CPS	Linked CPS-LEHD	Linked CPS-LEHD	Linked CPS-LEHD	Linked CPS-LEHD
Sample	HLL JEP	Common coded	Common coded	Common coded	Common coded	Common coded
Earnings measure	CPS	CPS	CPS	CPS	CPS	LEHD
Industry measure	CPS 18	CPS 18	CPS 18	LEHD 18	LEHD 299	LEHD 299
<i>Change from 1996-02 to 2012-18</i>						
Within-industry:						
Age, education & occupation:	18.2%	27.0%	15.1%	21.9%	6.0%	13.3%
Age and education	11.8%	20.2%	13.3%	12.9%	9.0%	14.4%
Occupation	4.1%	1.3%	2.0%	5.2%	0.4%	0.0%
Covariance: age+educ & occ.	2.2%	5.5%	-0.2%	3.8%	-3.6%	-1.0%
Residual	58.8%	43.6%	38.8%	25.9%	28.5%	20.6%
Between-industry:	23.1%	29.3%	46.0%	52.2%	65.5%	66.2%
Segregation	14.8%	34.9%	31.5%	28.5%	31.7%	14.8%
Age and education	3.8%	9.2%	8.6%	8.8%	9.6%	5.6%
Occupation	2.5%	6.7%	6.0%	4.8%	5.4%	2.0%
Covariance: age+educ. & occ:	8.4%	19.0%	16.7%	14.9%	16.7%	7.0%
Pay premia	1.0%	-45.8%	-14.9%	-1.4%	-1.2%	22.0%
Sorting	7.3%	40.2%	29.5%	25.1%	35.1%	29.4%
Covariance: age+educ. & ind.	2.0%	20.4%	15.9%	14.1%	19.9%	19.0%
Covariance: industry & occ.	5.3%	19.8%	13.7%	11.2%	15.5%	10.5%

Notes: The rows titled “Data” and “Sample” indicate the data used for the variance decomposition (see text for description). The row titled “Earnings measure” indicates whether CPS or LEHD earnings is used in the decomposition. In the row titled “Industry measure,” “CPS 18” refers to 18 NAICS sectors from the CPS-ASEC (recoding CPS-ASEC variable indly following Table C-5 of Pollard (2019)), “LEHD 18” refers to NAICS sectors from the LEHD, and “LEHD 299” refers to 299 4-digit NAICS industries from the LEHD. See equation (10) for definitions.